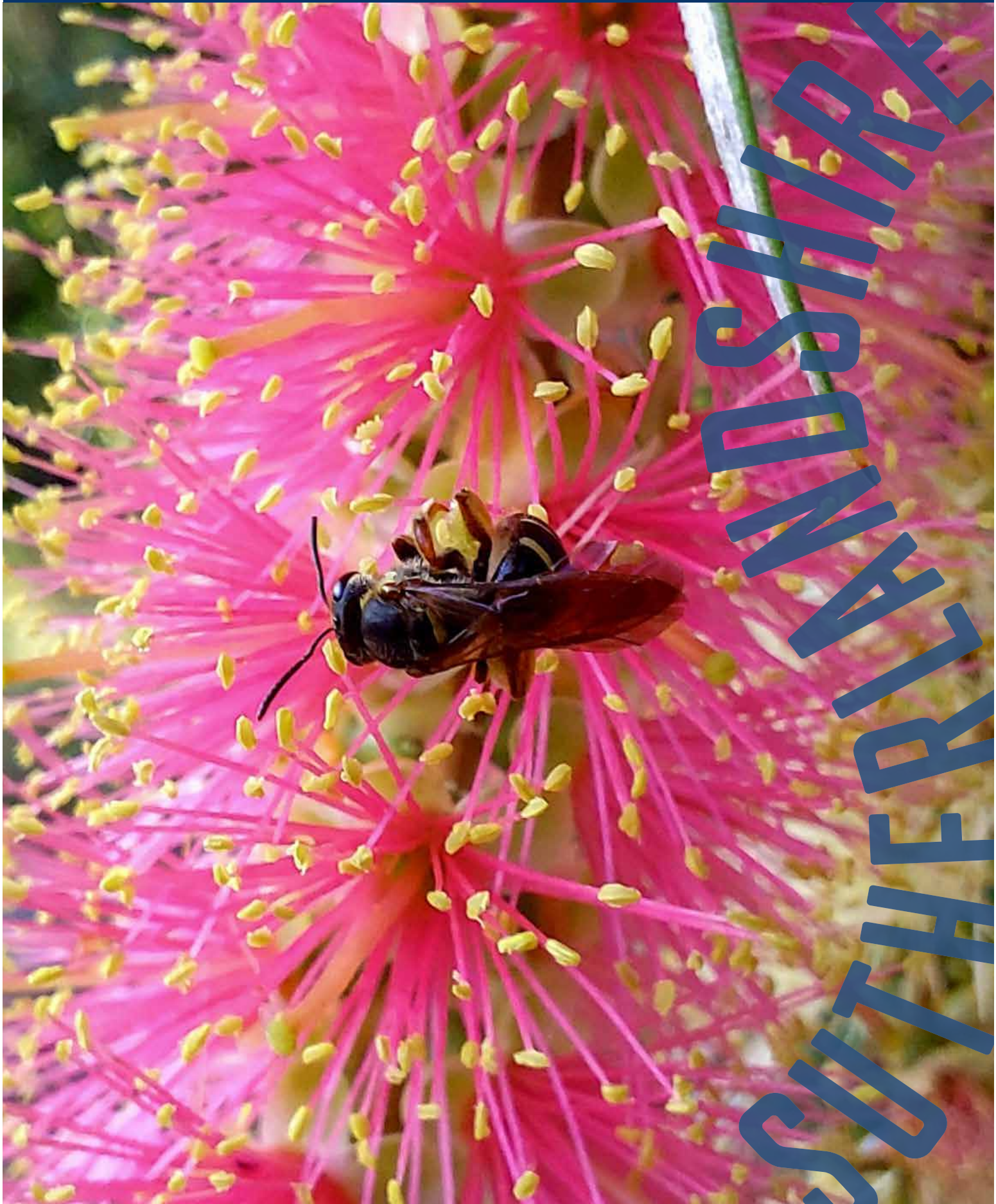


# THE BUSHCARE BULLETIN

APRIL 2024 - ISSUE 67





# Bushcare Calendar

Date Event

## APRIL

10, 18 & 24	Nursery propagation
5	Aboriginal bushfood walk
16	Spotlighting at Greenhills
18	Edible weeds walk
23	Spotlighting at Joseph Banks
26	Nursery gardening group

## MAY

8, 16 & 22	Nursery propagation
4	Bushcare Gathering
6, 13, 20 & 27	Propagation workshop at the Council Community Nursery
9	Bird spotting in The Royal
24	Nursery gardening group
28	Aboriginal bushfood walk
29	Bush Whackers

## JUNE

12, 20 & 26	Nursery propagation
3	Aboriginal bushfood walk
5	Working with woody weeds
18	Bird spotting in The Royal
27	Cape Baily walk
28	Nursery gardening group
29	Native plant ID workshop

Cover image - native bee - Emma Brame

# Bushcare update

By Jason Salmon - Team Leader Bushcare

There is no doubt about it, we are approaching the best weather for bushcaring. Gone, is the hot sticky mess of February and a big hoorah for the cooler days ahead. The weeds slow down and far less dirt sticks to ones brow. It is a time to appreciate the autumn flowering Banksia, Crowea and weedy senna. Why would we want to appreciate flowering weeds? Because they are easier to see! Then we can get to them and give them the love they deserve, a good cut with a saw or loppers then a neat slurp of herbicide (all in under 15 seconds using an APVMA approved herbicide and appropriate PPE). Good Job!

In more bad news for weeds, Albert Delardes Reserve Bushcare Group, Illawong, has received another small boost with a \$20k grant from Greater Sydney Local Land Services. This funding has been quite regular and the result is a good amount of asparagus fern and mother of millions have been carefully removed by bush regeneration contractors in several areas of the reserve. We will be holding a Bush Whackers event here on Wednesday 29 May to build on the great work already undertaken.

I would like to welcome our newest Bushcare Group, Biddy Giles Reserve at Kirrawee. The group will be working in the Critically Endangered Ecological Community, Sydney Turpentine Ironbark Forest remnant than can be found in the south west corner of the park. While small, it complements the small reserves of similar vegetation in Pollard Park and Flora Street.

There are still plenty of Bushcare shirts and hats available, so if you need a shirt or hat, please ask your Bushcare Officer to bring one along to the next workday.

In some sad news our recently retired, legendary labourer Barry Milton, rather suddenly passed away in mid January. Barry was a much loved character of Joseph Banks Native Plants Reserve and the Community Nursery. He will be dearly missed by staff and volunteers alike.



Albert Delardes



# Biddy Giles Park

By Sabrina Thompson - Bushcare Officer

All the construction workers called it 'the STIF'. They had no idea what 'the STIF' stood for but they knew it was important and they were told to "stay out!". I was one of a handful of workers that had the privilege of stepping onto 'the STIF' and seeing if we could regenerate the tiniest sliver of remnant Sydney Turpentine Ironbark Forest. Yes, I'm talking about what is now known as the Biddy Giles Park but fondly known as the Kirrawee Brick Pit.

This tiny sliver was double the size before construction, but it was cut in half to allow for a turning lane and footpath along Oak Road. The deal was that some space on the inside would be reclaimed to return the sliver back to its original size. A spectacular gabion wall was constructed to hold the chunky shale fill in which 2000 endemic native plants were expected to be planted. This was no mean feat, we all had RSI afterwards.

We started the regeneration process in 2018 during the drought. The ground was like concrete, hard clay but dusty on top, not very nice on a hot day. All the usual suspects were there, asparagus, lantana, ehrharta, asparagus, oh did I say that already? and more asparagus.

Then, in 2020 it rained. We discovered what the term 'seed bank' really meant. Yes, there was remnant vegetation there, angophoras, ironbarks, Microlaena, wonga wonga vine but not a lot on the list. After it rained the pioneers came up, hop bush, acacias, breynias and then the grasses like oat spear grass, wallaby grass and kangaroo grass. I guess this was an indication the tiny patch was never really disturbed and the seed bank remained intact. Together with our weed removal, which disturbed the seed bank, and the subsequent rain, it was what the site required to become the mighty little site it is today.

As a side note, I didn't mention the most important tree species of any STIF, the turpentine. I'm pretty sure that they were all cut down for their valued timber long before the brick pit even existed. But you'll be pleased to know that we planted several in the reclaimed area. And they are happy, happy, happy. Much to our surprise, all of the plantings have thrived, even the ones that were planted in the building rubble.

And so, to continue the story, the Biddy Giles Bushcare group has been inaugurated with four new, very enthusiastic volunteers. We started on Saturday 24 February 2024. If you would like to join us on the 4th Saturday afternoon of the month at 12.30pm you are most welcome.



Bidey Giles Park - Sabrina Thompson



# Seeds

By Emma Brame - Nursery Horticulturalist

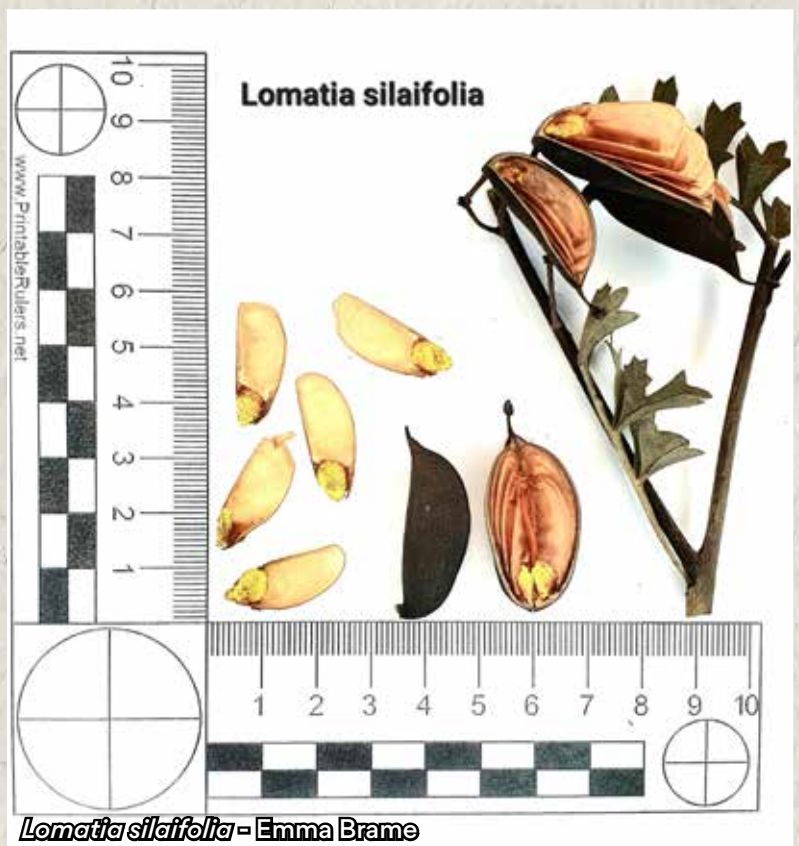
Seed is collected continuously throughout the year for propagation at the nursery. It is collected from Bushcare sites, reserves, the nursery gardens and thanks to our licence, some seed is even collected from the Royal National Park. The prime time for collecting and when the nursery is fortunate enough to restock a lot of its seed store is usually around November through to January. Throughout the year, there are always targeted species to be collected. The Bushland/Nursery Unit is sent a target list at the beginning of each month. If you are a Bushcare volunteer out on site and notice ripe seed, ask your Bushcare Officer if the nursery needs that particular species, remembering the 10% guidelines for collecting seeds (collect no more than 10% from one single plant). Here are a few species the nursery will be targeting in the upcoming months. In April, keep a look out for *Syzygium paniculatum* (magenta lilly pilly) and *Lomatia silaifolia* (crinkle bush). May will see *Acmena smithii* (lilly pilly), *Eupomatia laurina* (native guava), *Trema aspera* (native peach) and *Tristaniopsis laurina* (water gum) ripe for collection. June is not a big month for collection, however, this is a good month to keep an eye out for seed that is available all year round, such as *Banksia*, *Callistemon*, *Leptopermum* and *Melaleuca* species. *Isopogon* and *Petrophile* species can also be collected all year round, remembering to collect the previous season's cones (the cones lower down on branches). On this note, *Eucalyptus* seed can be hard to collect as they are often too high to reach. Keep an eye out for opportunistic low hanging or fallen branches with seed on them.

With more than 400 different species the nursery has propagated over the years, approximately 85% of the species have been propagated by seed. As you can imagine, it can be hard to remember what the ripe fruiting bodies look like (especially on some of our unusual and rarer species) and what the actual seed itself looks like. This can put our ID skills to the test. Occasionally seed gets wrongly identified, as some species looks so similar. For example, *Dichelachne crinita* and *Dichelachne micrantha* (both commonly known as plume grass). *D.*





*micrantha* is visibly smaller than *D. crinita* when comparing them to one another. Similarly, when we had *Pelargonium capitatum*, a weedy type of geranium was miss labelled as *Pelargonium australe* (coastal geranium). There has also the odd occasion when seed has not been processed/cleaned fully and seed has been stored incorrectly. The nursery for these reasons has started a seed catalogue that shows both what the ripe fruiting body looks like and what the seed itself looks like. Also in some photos, seed filler/packer is shown next to the seed. Photos are taken with measurements as a guide and as a reference. With so many species, this is a work in progress but has already been a very helpful tool for seed collection and has had great feedback internally and externally. Feel free to come have a look. A hard copy is kept on hand in the potting shed.



## Environmental Citizens of the year

By Cristine Breitenbach - Nursery Team Leader

Congratulations to our Sutherland Shire Council Nursery propagation volunteer group - Jan, Carole, Christine and Helena (not pictured), who were awarded the Environmental Citizen of the Year at our recent Australia Day Awards.

This group of four dedicated and passionate volunteers, whose specialised knowledge and experience strongly support the SSC Community Nursery team in production planning, propagation and identification of new plant species is aiding in the preservation of native flora. The team spends time researching plants, preparing seed, collating information, and records of seed availability. They also find time to assist in the maintenance of the outstanding display beds within the nursery.

This is a well-deserved award and one that is a representation of the hard work done by all our nursery propagation volunteers who contribute a great deal to the success of the Council's Community Nursery.



Jan, Carole, Christine and Cr Pesce - Mayor



# Spooning with Brad under the fig tree

By Bradley van Luyt - Bushcare Officer

You! Up the back! Stop sniggering!

Right, now that the immature types have stopped their carryings on I can chat about our little Working with Woody Weeds Workshop we held recently here at the nursery. Though not on as a grand a scale as last year's Bushcraft Fest, it was still a busy day of environmental education and weedy whittling.

I set up our class under the big fig at the NE corner of the nursery. It's a magnificent specimen and an ideal spot for an outdoor classroom. Blocks, axes and aprons were laid out and the punters came in. A short walk and talk about woody weeds and their impacts on the environment was held and then we headed back to the weedy wood. Our new Bush Regen Team Leader, Justin Polley, harvested some nice fresh privet from Ewey Creek for our prospective woody weed workers to turn into useful utensils. Privet is a great weed to carve. Firm and heavy when wet it, splits cleanly and has some interesting figure through it. Though surrounded by big boughs of fig we kept to the privet - a good use of a bad weed. Our new carvers were amazed at the ease with which they could split the privet logs with their axes and clubs. With a few deft chops a half log was transformed into a rough spoon blank. I then showed our group how to choke up on the head of the axe and almost use it like a scalpel, taking light measured cuts to shave the blocky blank down into a more rounded spoon shaped stick. And then it was smoko!



Splitting logs - Ruth Sannes



Spoon carving workshop - Ruth Sannes



We moved to another tree, sitting under the box elder at the potting shed (looking at it with spoonhungry eyes) and I bored our spoon makers with my tales of my spoon travels around the world, “when I was in Sweden...Did I tell you about the workshop I helped run in Amsterdam..? When I went to Spoonfest...” At some stage they woke from their slumber as the coffee kicked in and we headed back to our big fig and continued the journey from weed to soup stirrer.

Axes were exchanged for sharp knives and I took our group through the various grips and grasps used to carve green wood safely. “Tools down, eyes up here please” was an oft repeated phrase as new and unfamiliar ways to use a knife were shown. Thumb-push, thumb-pull, chest lever grip, reinforced thumb-pull and of course the knee grip were all demonstrated and employed with increasing degrees of success. Shavings of all sizes and shapes hit the ground as our axed out blank assumed the recognisable shape of that most fundamental of utensils.

When carving one can get absorbed as the activity takes on an almost meditative quality. Such reverie was disturbed by the call for lunch. More stories, some books to browse through for inspiration and a sandwich too and then back to it.

A spoon is just a bowl on the end of a stick and up until now we had just a stick with a round flat thing on the end. This is where the hook knife came into play. With a careful grip and slow light paring cuts across the grain, bowl began to descend into the round face of these erstwhile paddles. The hook knife is just that, a knife in the shape of a hook, and it takes a little practice to get working right but when that sweet spot is reached, it sings through the wet privet.

As our workshop drew to its inevitable close we talked about tools, finishes and decoration too. I gave a very brief look at the decorative art that is chip carving and then, suddenly it was knocking off time. Our weary new carvers had sore hands, but great new spoons and we have one less privet to annoy our bushland. What a nice way to spend a day, fiddling about with friends under the shade of wonderful tree and great way to use what would otherwise be a waste material. Working with woody weeds is a wonderful way to learn about our local environment and tell new people about our Bushcare Program too.

## The Fray

Bushcare's Shire partners are active all year round and continue to host events. All welcome volunteers to help run the programs that help protect the Shire's natural areas. Contact the groups direct if you wish to find out more information or participate

### AUSTRALIAN PLANTS SOCIETY

#### (SUTHERLAND GROUP)

Sutherland APS group, meet the 3rd Wednesday of each month, 7.00pm at the GyMEA Community Centre, 39 GyMEA Bay Rd, GyMEA.

Facebook: <https://www.facebook.com/APS.Sutherland>

Website: <http://austplants.com.au/Sutherland>

Contact Ralph Cartwright on 9548 1074



### MENAI WILDFLOWER GROUP

Meetings and propagation workshops are held at the Illawong Fire Station. For activities check out our Website and Facebook page.

Website: [www.menaiwildflower.austplants.com.au](http://www.menaiwildflower.austplants.com.au)



### BOTANY BAY BUSY BEES

The group meet and work on the mornings of the 2nd & 4th Thursdays of the month, excluding December & January, 9.00am to noon at various locations within the park. Habitats range from coastal heath to tall woodland.

Morning tea is provided and tools supplied. Call Kamay Botany Bay National Park to enquire: 9668 2010. The group meet at the visitors centre in the Park.



### ROYAL NATIONAL PARK (FRIENDS OF THE ROYAL)

If you are interested in our program please contact Royal Area office on 9542 0632 or email: [royal.nationalpark@environment.nsw.gov.au](mailto:royal.nationalpark@environment.nsw.gov.au). For

more about Friends of Royal check their web page: [www.friendsofroyal.org.au/](http://www.friendsofroyal.org.au/)



# Bushland areas are part of Aboriginal heritage

By Graham Avery - Natural Areas Aboriginal Heritage Officer

We all know that Aboriginal people had been living in the Sydney Basin for at least 20,000 years and lived in the Norongerragal-Gweagal ngura (Sutherland Shire area) at least 8,000 years. They were living 9km east from the current coastline today, so you can imagine that there were no such places like Kurranulla marang (Cronulla beach) and Gamay (Botany Bay) from 10,000 years ago when the sea level was much lower than today during the Last Glacial Maximum. The Deeban (Port Hacking River) was a fresh-water creek valley connected with the ancient salt-water river known as Tucoerah (Georges River) today.

The Aboriginal people were already living in the bushland areas and waterways because they believed the natural world were given to them as a gift from their Ancestors which might explain why they lived sustainably for 50,000 years. The Ancestors handed down Kinship, Totems and Lore to Aboriginal descendants today.

My Aboriginal Ancestors on my maternal side lived on the coast of New South Wales for thousands of years. I belonged to Dhurga, Gumbaynggirr, Dhanghutti, Djirringanj, and Dharawal language groups. On my paternal side, my Aboriginal Ancestors came from Cobar, Nyngan, and Ivanhoe which is Ngiyampaa language area, however, my Ngiyampaa Ancestors also had close association with Wiradjuri language group through ceremonies and kinship system. Most of my languages associated with the bushland areas, fauna, natural features, and waterways.

Below are some Aboriginal plants name from different publications by William Dawes, William Macarthur, and R.H. Mathews.

Thurrawal (Dharawal)	Thoorga (dhurga)	Dharug (Sydney)	Common name, botanical name
Dtharowal	Dhur-rou'-a		Cabbage palm, <i>Livistona australis</i>
Barremma	Goorn-dee'-ra	Dirrabari, Muggargru	Ironbark, <i>Eucalyptus sp.</i>
	Bur'-rum-bur-ra		Peppermint, <i>Eucalyptus piperita</i>
Yah-ruigne	Dhur-ra'-nee	Boangie	Spotted gum, <i>Corymbia maculata</i>
Yeh-dthedeh	Yaala		Smooth-barked apple, <i>Angophora costata</i>
	Meen'-go		Grasstree, <i>Xanthorrhoea sp.</i>
Goor'-gool		Mannen	Bloodwood, <i>Corymbia sp.</i>
Booreeah			Turpentine, <i>Syncarpia glomulifera</i>
	Jer-rung'-a-ra		Tree fern, <i>Cyathea sp</i>
Turriell	Ma-ma'-ja	Kwigan	Magenta lilly pilly, <i>Syzygium paniculatum</i>





# Weeds around the world

By Bradley van Luyt - Bushcare Officer

I can't escape them! In January I was on holiday with my family in Europe. We spent a few days in the Netherlands catching up with rels and also doing the tourist thing. Rijksmuseum? Check! Dutch/Indonesian Rijstafel for dinner? Check! Dress up in silly clobber in Volendam? Double super check!!!

Nice little place Volendam. Dutch as! Flat, dykes, cheese and... what the!?! Weeds!!! No not tulips, not oak trees but wretched bloody Pampas grass!!! It's bloody windy over there and I'm worried that those seeds might blow all the way back here. I have registered my concerns with our Invasive Species Unit but they reckon it's a little way out of their jurisdiction.

I hope it doesn't become as bad a weed in Volendam as it is here.



Pampas Grass - Bradley van Luyt



Brad enjoying himself

# Native pollinator garden work day

By Bill Howse - Bushcare Officer

For a number of years we have slowly been turning an unused area at the nursery into a native pollinator education garden. Some of you may have helped with weeding or planting at our Nursery Whackers events and seen the slow change from exotic camellias and obscure non local rainforest species to themed native plantings. To help further this transformation to a pollinator haven, I will be running a regular work day on the 2nd Thursday morning from 9:00am -11:00am where we will be weeding and planting, mulching and creating pollinator habitats. If you'd like to learn more about native bees and other pollinators, come along and give us a hand as we weed and chat.



Pollinator garden - Bill Howse



# BUSHCARE WORKDAYS

**Workdays can be cancelled at short notice. (BvL) etc after the time denotes the first initial of the Bushcare Officer responsible for the group.**

## 1ST SATURDAY

Lucas Heights Conservation Area, 8.00am (JS)  
Gunnamatta Park 8.30am (GL)  
Wanda Beach, Cronulla 8.30am (ST)  
Alcheringa Reserve, Miranda 12.30pm (ST)  
Tea Tree Place, Kirrawee 1.00pm (GL)

## 2ND SATURDAY

Maandowie, Loftus 8.30am (GL)  
Freya St, Kareela 8.30am (ST)  
Struen Marie Reserve, Kareela 10.30am (ST)  
Yarra Vista Court, Yarrawarrah 1.00pm (ST)

## 3RD SATURDAY

Burraneer Park, Caringbah 8.30 am (GL)  
Hall Drive Reserve, Menai 8.30am (ST)  
Beauford Park, Caringbah 1.00pm (GL)  
Corinth Road, Heathcote 12.30pm (ST)

## 4TH SATURDAY

Akuna Avenue Oval, Bangor 8.30am (ST)  
The Esplanade, Cronulla Point 8.30am (GL)  
Biddy Giles Park, Kirrawee 12.30pm (ST)  
Various reserves, Maianbar 1.30pm (GL)

## 1ST SUNDAY

Carina Bay, Como 8:30am (GL)  
Bass & Flinders Point, Cronulla 8.30am (BH)  
Burnum Burnum Sanct., Jannali 9.00am (ST)  
The Crescent Creek, Woronora 1.00pm (BH)  
Oyster Creek Gully, Jannali 1.00pm (GL)  
Kingswood Road, Engadine 1.00pm (ST)

## 2ND SUNDAY

Kareena Park, Caringbah 8.30 (ST)  
Fernleigh Road Res, Caringbah 9:00am (BH)  
Kareela Reserve, Kareela 1.00pm (BH)  
Ingrid Rd/Anitra Reserve, Kareela 1.00pm (ST)

## 3RD SUNDAY

Prince Edward Park, Woronora 8.30am (BH)  
Honeysuckle Reserve, Jannali 8.30am (GL)  
Paruna Reserve, Como West 9.00am (ST)  
Grays Point Reserve 1.00pm (GL)  
Buckinbah Place Reserve, Lilli Pilli 1.00pm (ST)

## 4TH SUNDAY

Darook Park, Cronulla 8.30am (BH)  
The Glen Reserve, Bonnet Bay 8.30am (ST)  
Savilles Creek, Kirrawee 8.30am (GL)  
Banksia Res, Engadine 1.00pm (ST)  
Marina Crescent, Gymea Bay 1.00pm (GL)  
Rutherford Reserve, Burraneer, 1.00pm (BH)

## 1ST MONDAY

Whitton Street, Heathcote 8.30am (BvL)  
Taren Point Shorebird, Taren Point 9.00am (ST)  
Columbine Close, Loftus 1:00pm (BvL)  
Brigalow Place, Engadine 1:00pm (ST)

## 2ND MONDAY

Delta St, Sutherland 9.00am (BH)  
Koolangara Res, Bonnet Bay 9:00am (ST)

## 3RD MONDAY

Hakea Street, Yarrawarrah, 8.30am (BvL)  
Port Hacking Rd Res., Sylvania 9.00am (ST)  
Australia Rd, Barden Ridge 9.00am (BH)  
Nelson Street, Engadine 1.00pm (BvL)

## 4TH MONDAY

Young Street Reserve, Sylvania 9.00am (ST)

## 1ST TUESDAY

Myra Creek, Loftus 8.30am (BvL)  
Dunoon Place Reserve, Bangor 9.00am (BH)  
Menai Conservation Park, Menai 9.00am (ST)  
Upper Forbes Creek, Engadine 1.00pm (BvL)  
Surrey Place, Kirrawee 1.00pm (BH)

## 2ND TUESDAY

Caravan Head Res, Oyster Bay 9.00am (BvL)  
Lilli Pilli Point Reserve 9.00am (BH)  
Forbes Creek South, Engadine 1.00pm (BvL)

## 3RD TUESDAY

Forestgrove Drive, Menai 9.00am (ST)  
Kareena Park, Caringbah 9.00am (BH)  
Sesquicentenary Pk, Heathcote 9.00am (BvL)  
Corea Street Reserve, Sylvania 1.00pm (ST)  
Darook Park Sth, Cronulla 1.00pm (BH)

## 4TH TUESDAY

Bottle Creek, Heathcote 8.30am (BvL)  
Loftus St, Bundeena 9.00am (BH)  
Lilli Pilli Point Reserve 9.00am (ST)  
Hungry Point Res, Cronulla 12.30pm (ST)  
Ninth Avenue North, Loftus 1.00pm (BvL)

## 1ST WEDNESDAY

Windy Point, Cronulla 8.30am (ST)  
Bundeena Reserve, Bundeena 9.00am (GL)  
Prices Reserve South, Woronora 9.00am (BH)  
Simpson Rd, Bundeena 11.30am (GL)

## 2ND WEDNESDAY

Cabbage Tree Point, Bundeena 9.00am (BvL)  
Constables Point, Maianbar 9.00am (GL)  
Green Point Rd Res, Oyster Bay 9.00am (ST)  
Alcheringa Reserve 9.00am (BH)  
Gooyong Reserve, Bangor 1.00pm (BH)

## 3RD WEDNESDAY

Croston Rd, Engadine 9.00am (BvL)  
Albert Delardes Reserve, Illawong 9.00am (ST)  
Gooyong Riverside, Woronora 9.00am (BH)  
Dunwell Avenue, Loftus 1.00pm (BvL)

## 4TH WEDNESDAY

Forest & Corella Roads, Kirrawee 9.00am (BvL)  
Newcombe Street, Maianbar 9.00am (GL)  
Wattlebird Reserve, Caringbah 9.00am (BH)

## 1ST THURSDAY

Kareela Golf Course 7.00am (GL)  
Joseph Banks Native Plant Reserve 9.00am (GL)  
Louden Avenue, Illawong 9.00am (BvL)  
John McKinn Park, Cronulla 9.00am (BH)

## 2ND THURSDAY

Kareela Golf Course 7.00am (GL)  
Parc Menai 8.30am (BvL)  
Native pollinator Garden 9.00am (BH)

## 3RD THURSDAY

Kareela Golf Course 7.00am (GL)  
Eighth Avenue, Loftus 8:30am (BvL)  
Savilles Creek Reserve, Kirrawee 9.00am (GL)

## 4TH THURSDAY

Kareela Golf Course 7.00am (GL)  
Drysdale Place, Kareela 9.00am (BH)

## 1ST FRIDAY

Coonong Creek Reserve, Gymea 8:30am (GL)  
Ewey Creek, Miranda 8.30am (BvL)

## 2ND FRIDAY

Ninth Avenue Reserve, Loftus 9.00am (BvL)

## 3RD FRIDAY

Farrer Place, Oyster Bay 8.30am (BvL)  
Kyogle Place, Grays Point 8.30am (GL)  
Gunnamatta Foreshore, Cronulla 1.00pm (GL)

## 4TH FRIDAY

Kiora Road South, Yowie Bay 8:30am (BvL)  
Shiprock Reserve, Lilli Pilli 9.00am (GL)  
Community Nursery, Gymea 9:00am



*Comesperma ericinum*  
- Emma Brame

To join Bushcare  
please go to

<https://www.sutherlandshire.nsw.gov.au/Bushcare-Volunteers>



Don't forget our Facebook page. It is a hub to share information, photographs and video amongst users. Log onto Facebook, search 'Sutherland Shire Bushcare' and 'like' the page.



## Special Events

### BUSH WHACKERS

Wednesday 29 May

9:00am - 12:00pm

Albert Delardes, Illawong

Bushcare. What is it all about? If you're curious, come along to Bush Whackers at the Albert Delardes reserve, Illawong. Meet the whole Bushcare Team. This special Bushcare event is the perfect excuse to get out and meet new people, learn about the Shire's beautiful bushland, hear about our latest grant from LLS and get some exercise. All equipment, gloves and morning tea will be provided.

### AUTUMN GATHERING

Saturday 4 May

10:00am - 1:00pm

The Encore Room

The Pavillion Performing Arts Centre, Sutherland

The Bushcare gathering is a chance to catch up with other Bushcare groups, listen to a couple of guest speakers and enjoy a light lunch. Please note that the venue has changed.

### Bushwalks and Guided Nature Walks



### ABORIGINAL BUSHFOOD WALK

Friday 5 April

4:30pm - 6:00pm

Tuesday 28 May

10:00am - 11:30am

Monday 3 June

10:00am - 11:30am

Join Council's Native Areas Aboriginal Heritage Officer, Graham Avery, for a guided walk around Joseph Banks Native Garden where you will learn about Australian native bushfood.

### SPOTLIGHTING AT GREENHILLS WETLAND

Tuesday 16 April

5:30pm - 7:00pm

Our invasive species team will give you an insight into their priority weed and pest animal program. Afterwards we will observe native frogs and hopefully spot some turtles and mammals as well. BYO torches please and all children under the age of 18 must be accompanied by an adult.

### EDIBLE WEEDS WORKSHOP

Thursday 18 April

9:00am - 12:00pm

You will never look at weeds in the same way again after taking part in this workshop. Diego Bonetto is a weed forager, artist, storyteller and an expert on identifying the nutritious plants that grow under our feet that most people call 'weeds'.

### SPOTLIGHTING AT JOSEPH BANKS NATIVE PLANT RESERVE

Tuesday 23 April

5:30pm - 7:00pm

Come join us for an exciting evening of spotlighting at the beautiful Joseph Banks Native Plant Reserve! This in-person event allows you to explore the reserve at night and observe the unique flora and fauna that come alive after dark.

### BIRD SPOTTING IN THE ROYAL

Thursday 9 May

Tuesday 18 June

8:00am - 11:30am

Join Bushcare and bird expert, Ricki Coughlan, for a bird spotting stroll through The Royal National Park.

### TO BOOK GO TO:

[www.sutherlandshire.nsw.gov.au](http://www.sutherlandshire.nsw.gov.au)

### AND SEARCH FOR BUSHCARE EVENTS

### CAPE BAILY WALK

Wednesday 27 June

9:00am - 12:30pm

This spectacular and popular guided coastal 5km walk at Kamay - Botany Bay National Park will take you around the sand dunes, heath lands and hanging swamps. You'll see great cliff top views and the Cape Baily lighthouse.

### Free Courses and Workshops

### NURSEY PROPAGATION WORKSHOP

Monday 6 May

Monday 13 May

Monday 20 May

Monday 27 May

9:00am - 10:00am

Visit the Community Nursery in GyMEA and learn how to propagate by cuttings in a Nursery setting and how you can propagate them at home!! Feel free to bring in your own cutting material.

### WORKING WITH WOODY WEEDS

Wednesday 5 June

8:30am - 4:00pm

Join Bushcare on a journey to discover what to do with woody weeds. You'll learn how to turn useless privet into one of the most useful of objects - a spoon. All tools, materials and morning tea supplied.

### NATIVE PLANT ID

Saturday 29 June

9:00am - 2:00pm

This workshop will look at the common native plants found in many of our remnant bushland reserves with simple tips on how to identify them. It will include a field trip to a bushland reserve in the afternoon to view the studied plants. Remember to bring your own water and your walking shoes.



# Joseph Banks Native Garden – The Best Kept Secret

By Jason Salmon

Have you ever been to Joseph Banks Native Plants Reserve?

So many people who happen upon this magical, Council managed, 2-hectare, entirely native garden say "wow! I never knew this was here!" Regular visitors say it is their place of serenity. The reserve has birds and wildlife, many labelled plants from all over Australia, interpretive signs, toilets, BBQs, seated areas and wheelchair accessible paths that wind their way through ridgetop to rainforest. Come and discover this treasure for yourself for your next family barbecue or day out! Car park entry is off Manooka Place Kareela and the gates are open daily from 9am to 7pm in summer, and 5pm in winter.



Bushcare Volunteers and The Australian Plants Society - NSW members also assist in maintaining the gardens with workdays on the 1st Thursday and 1st Sunday of each month.

## Bushcare Contact Details

### PHONE

02 9524 5672

And follow the prompts

### EMAIL

bushcare@ssc.nsw.gov.au

### WEB

[www.sutherlandshire.nsw.gov.au](http://www.sutherlandshire.nsw.gov.au)

### JASON

0414 193 874 (Mon-Fri)

[jsalmon@ssc.nsw.gov.au](mailto:jsalmon@ssc.nsw.gov.au)

### BRADLEY

0414 193 710 (Mon-Fri)

[bvanluyt@ssc.nsw.gov.au](mailto:bvanluyt@ssc.nsw.gov.au)

### BILL

0414 193 709 (Sun-Thur)

[whowse@ssc.nsw.gov.au](mailto:whowse@ssc.nsw.gov.au)

### SABRINA

0414 193 873 (Sat-Wed)

[smthompson@ssc.nsw.gov.au](mailto:smthompson@ssc.nsw.gov.au)

### GRACE

0408 538 143 (Wed-Sun)

[glonergan@ssc.nsw.gov.au](mailto:glonergan@ssc.nsw.gov.au)



<https://www.facebook.com/sscbushcare>

POSTAGE  
PAID  
AUSTRALIA

***Bushcare Bulletin***  
***April 2024***

Print Post Approved  
PP297537/00150

If undelivered please return to:  
Sutherland Shire Council Bushcare  
Locked Bag 17, Sutherland NSW 1499

