



SHARP
MIND
STRONG
PLAY
STRATEGY
AND
IMPLEMENTATION
PLAN
2021 - 2031

PLAY
**STRATEGY AND
IMPLEMENTATION PLAN**

2021 - 2031

At Sutherland Shire Council we do more than serve our community - we are our community.

We understand that our natural landscapes - the bays, beaches and bush - and our love of outdoor living gives us a unique energy that sets us apart from anywhere else.

This translates into an active community - and a living energy - that propels us forward.

To align our culture to our community we are active, evolving, respectful and collaborative - this energy can be seen in everything we do. From having a can-do attitude, to embracing opportunity and change, being people-centred and working together as one.

That's why Sutherland Shire is a place for life - its vibrancy brings people to life and makes it a place they want to stay forever.

It's our role to enhance the spirit of our area and its people.

Prepared by
Sutherland Shire Council

October 2021

Contact Details
Sutherland Shire Council
4-20 Eton Street
Sutherland NSW
Australia

Locked Bag 17,
Sutherland 1499

T 02 9710 0333
ssc@ssc.nsw.gov.au
sutherlandshire.nsw.gov.au

© Sutherland Shire Council 2021

Acknowledgement of Country

Sutherland Shire Council acknowledges the Dharawal speaking people who are the Traditional Custodians of the Land of Sutherland Shire, and pays respect to their culture, history and Elders past, present and emerging, and extends that respect to other Aboriginal and Torres Strait Islander people.



CONTENTS

Introduction	4
Our Vision	5
Open space and recreation	6
Our Principles	6
Open space and recreation At a Glance.....	7
Our Focus	7
Our Planning Process	8
Our Strategic Approach	9
Strategic Development	9
Delivering the Strategy.....	10
Strategy Objectives and Measures Context	11
Our Community At a Glance.....	14
Our Play Spaces At a Glance.....	15
Consultation.....	17
Drivers of Change	18
Areas of focus and Implementation plans.....	20
Appendix Service Standards	26

INTRODUCTION

This Play Strategy and Implementation Plan - the Play Strategy - is all about enhancing the opportunity for everyone in our community to experience play in the unique and valued open spaces of Sutherland Shire.

As a key strategy within Council's Integrated Planning and Reporting framework, the Play Strategy is a long term plan that directly aligns to our Community Strategic Plan.

The Play Strategy considers the future of our play spaces. In this context, play spaces are outdoor facilities that are accessible for children, youth and adults to play, and which are owned or managed by Sutherland Shire Council. This includes a diverse range of play opportunities including nature play spaces, playgrounds to suit different needs and abilities, skate parks, informal sport courts, walking circuits and fitness equipment.

The strategy outlines three key areas of focus centred on planning for play spaces. These support our community's needs and lifestyles, now and into the future, by providing play for everyone and by ensuring we get best value for our play facilities.

A collaborative approach and ongoing consultation with our community will inform our ongoing planning and implementation of the Strategy.

The activities that Council will undertake to provide our play spaces and to progress of the Play Strategy are included in the Implementation Plan and Appendix. The implementation actions will be detailed in Council's four year Delivery Program and annual Operational Plans.



OUR VISION

*Play spaces for everyone -
welcoming, diverse and fun!*



OUR PRINCIPLES

INCLUSION

Everyone is welcome to play. We want everyone - regardless of their age, ability or cultural background - to be able to use and enjoy our play spaces.

DIVERSITY

We are a diverse community with diverse needs for play. Each neighbourhood needs a variety of opportunities for play.

COLLABORATION

We will work as a community to achieve better outcomes for play that reflect our shared values and needs.

EQUITY

We will distribute the provision of play spaces equitably across our neighbourhoods.

QUALITY

Our play spaces should be well-designed, well-maintained and visually appealing.

SAFETY

Safety and challenge in play is balanced by applying good design and management to our play spaces.

OUR FOCUS



Area of Focus

1

Play spaces now and for the future

Play spaces are opportunities for communities to connect and build relationships. It is important as our neighbourhoods grow and change that everyone can access opportunities for play. We aim to ensure that play spaces are distributed equitably across the Shire and can be easily accessed by everyone, both now and in the future.



Area of Focus

2

Play spaces for everyone

Play is not just for the young. Play can be for everyone – young and old, families and carers, and people of all abilities. We want to provide play spaces that are more inclusive and that bring us all together. We want to provide a variety of play opportunities to suit different needs and promote active and healthy lifestyles.



Area of Focus

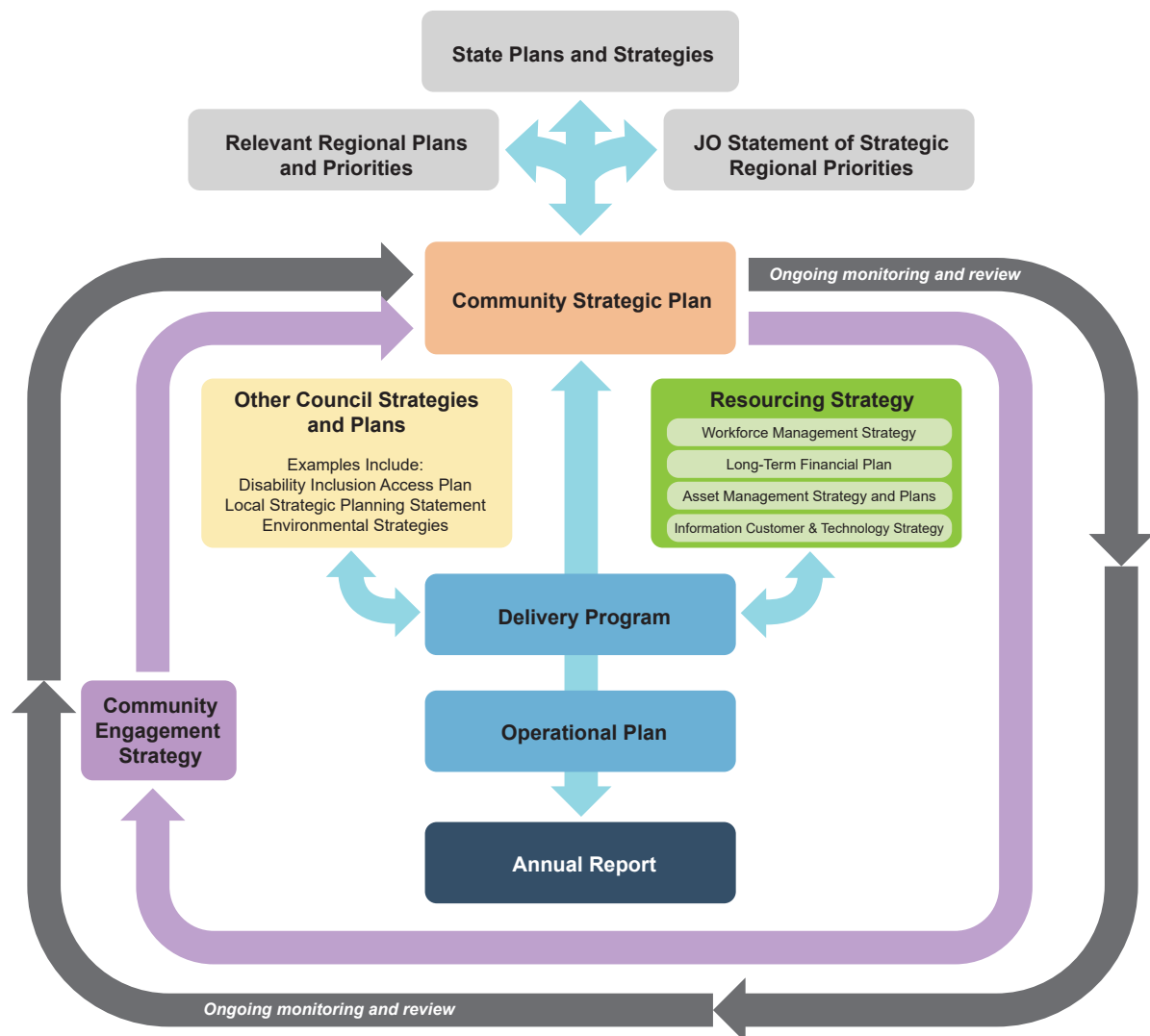
3

Best value for the community

It is important that our play space investment and management obtains the best value for our community over the long term. We want to optimise the use of our play spaces to provide more opportunities for the community to be active and connect to nature.

OUR PLANNING PROCESS

Council's Plans and Strategies integrate and work together to make Sutherland Shire a connected and safe community that respects people and nature, enjoying active lives in a strong local economy.



OUR STRATEGIC APPROACH

Council has an integrated approach. Council's Plans and Strategies work together to make the Sutherland Shire a liveable place for all people.



The Play Strategy and Implementation Plan expands on Our Community Strategic Plan and sets out approaches taken by Council to sustain a liveable place with a high quality of life. A number of intersecting and 'supporting documents' are connected and sit alongside the Play Strategy and Implementation Plan. These include:

- Open Space Strategy and Implementation Plan
- Sport Strategy and Implementation Plan
- Catchment and Waterways Strategy
- Active Transport Strategy
- Leisure Centres Strategy

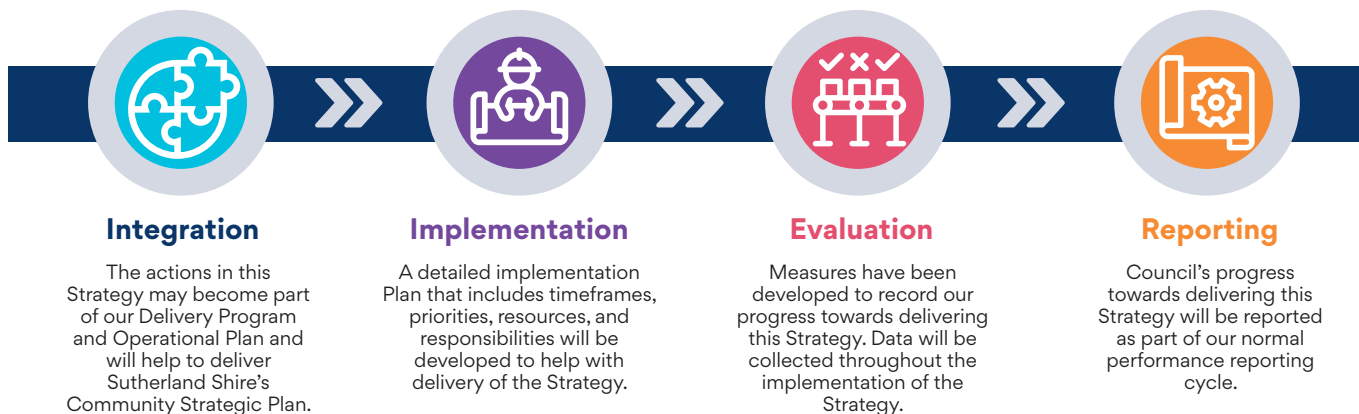
Some of the above were still in development at the time of publication of this document.

STRATEGIC DEVELOPMENT

In 2019 Council adopted the Informing Strategy - Open Space and Recreation. In 2021 Council commenced developing three strategy and implementation plans to expand upon and replace the Informing Strategy. The three Strategy and Implementation Plans are Open Space, Play (this document) and Sport.

Following analysis of existing network of play spaces, We consulted with Councillors, Council officers and the community to develop our vision, principles, focus areas and service delivery models. Further workshops were then held to develop strategies and actions to incorporate into this Strategy and Implementation Plan.

DELIVERING THE STRATEGY



INTEGRATION

This Play Strategy and Implementation Plan will integrate with our four year Delivery Program and annual Operational plans, supporting our delivery of Sutherland Shire's Community Strategic Plan.

IMPLEMENTATION

The delivery of the Strategy will be guided by the Implementation Plan contained within it. The Implementation Plan sets out a program of actions for each of the Focus Areas and includes timeframes and responsibilities.

The Appendix contains Service Standards for Council's provision of play facilities.

EVALUATION

Monitoring and evaluating our delivery of the Strategy will be ongoing. We will use a range of methods to help us measure the Strategy's outcomes. These methods may include demographic data, participation/usage data, community and customer satisfaction surveys, focus groups and case studies.

REPORTING

We will report on the delivery of this Strategy in the following ways:

- Occasional reporting via social media and Our Shire newsletter
- Half yearly reporting to Council
- Annual Report
- Major review in 2025 prior to development of the next Play Strategy

RESOURCING

Most of the actions in this Strategy will not require additional funding and will be included as part of our everyday work. Some actions will require additional funding and these will be considered as part of Council's annual budget and planning process. We may apply for external funding to help us deliver the actions in this Strategy.



STRATEGY OBJECTIVES AND MEASURES

WE AIM TO

Provide play spaces that are distributed equitably across the Shire and can be easily accessed by everyone, both now and in the future.

Provide a variety of play opportunities to suit different needs and promote active and healthy lifestyles.

Optimise the provision of play spaces to provide more opportunities for the community to be active and connect to nature.

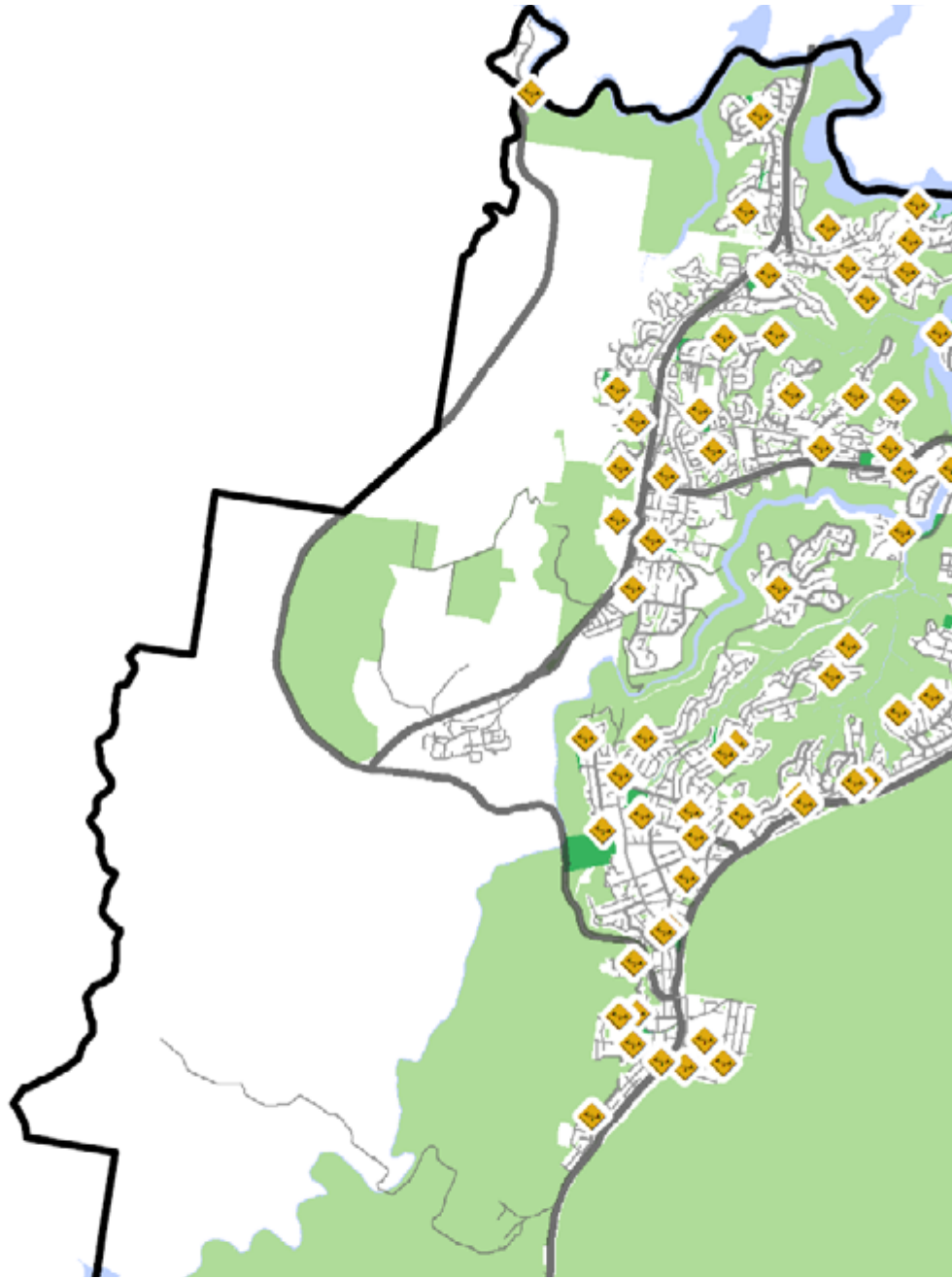
WE WILL TRACK OUR PROGRESS AGAINST

- The proportion of homes within a ten minute walk of a play space, and preferably a five minute walk in high-density growth areas.
- The proportion of play spaces with highly inclusive play items.
- The proportion of play spaces with inclusive access.
- The number of new and upgraded youth play and fitness facilities.
- The number of play spaces renewed to current Service Standards.



CONTEXT

This Strategy fits within a NSW Government and Council planning context.



NSW PLANNING CONTEXT

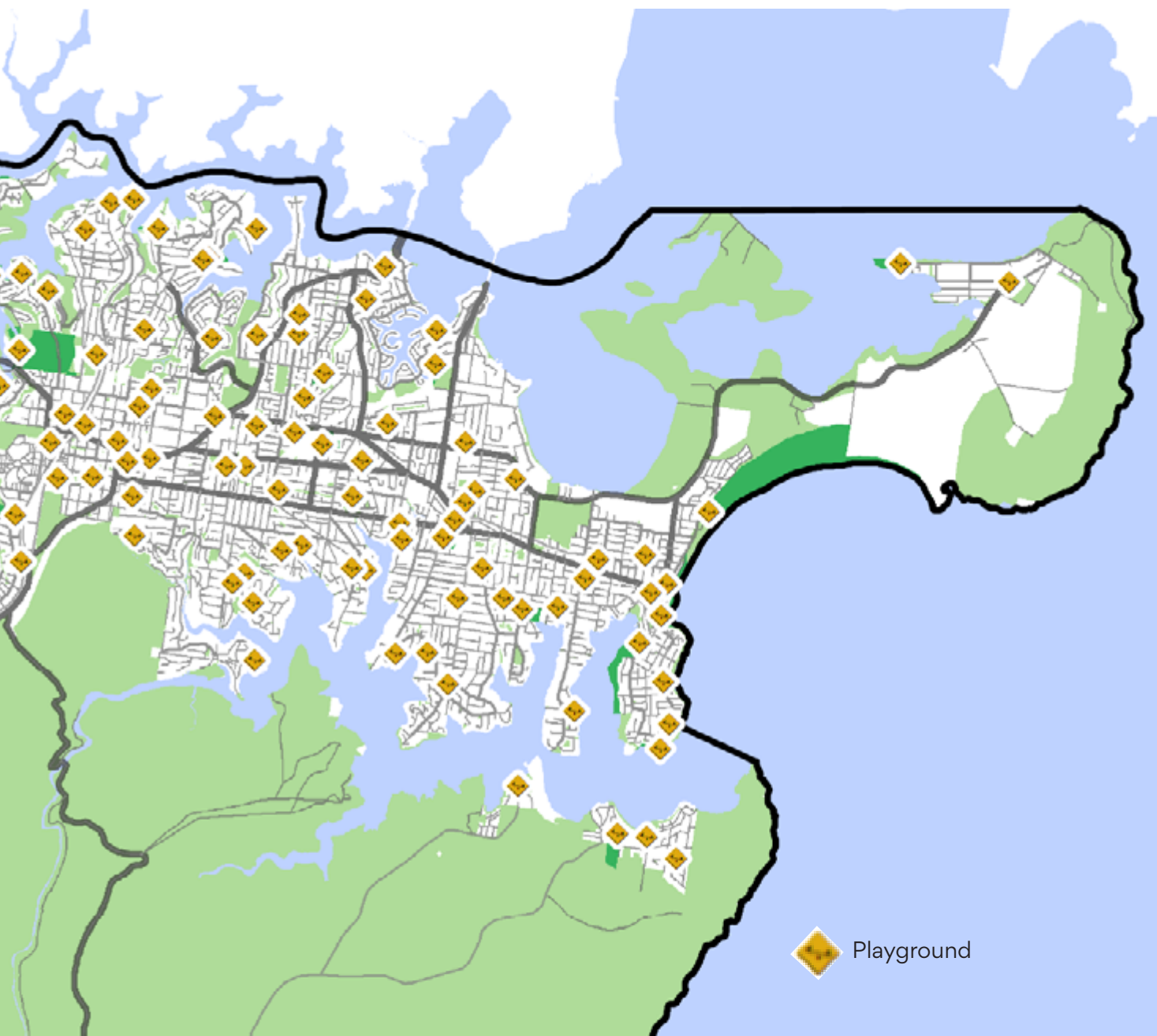
This Play Strategy fits within a planning context for open space at State and regional levels. Our Shire is unique, yet we are part of NSW, the Sydney Region and its South District.

Greener Places¹ outlines the NSW Government's position on green infrastructure and establishes principles for the strategic provision of open space at regional and local levels, which are reflected in this Play Strategy.

This Play Strategy follows the NSW Government's Everyone Can Play guideline which is aimed at ensuring inclusive play becomes the norm in NSW.²

¹ Government Architect NSW, Greener Places [website], <<https://www.governmentarchitect.nsw.gov.au/policies/greener-places>>, (accessed 20 December 2020).

² NSW Government, Everyone Can Play [website], <<https://www.everyonecanplay.nsw.gov.au>>, (accessed 20 December 2020).



SUTHERLAND SHIRE'S PLAY SPACES

Sutherland Shire has a wonderful portfolio of play spaces, including a number of playgrounds for children that are award winning for their design, like the playground at Bonna Point, Kurnell . We presently have 143 children's playgrounds dispersed across the local government area, along with 6 skate facilities and many play group play spaces.

Currently most of our play spaces cater for one age group and this is generally the 2-8 year age group. However, this Play Strategy introduces the idea of play spaces to suit a range of age groups, needs and abilities.

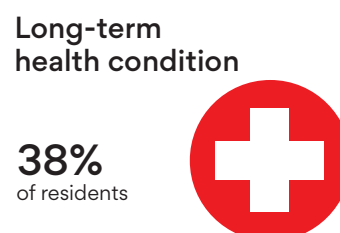
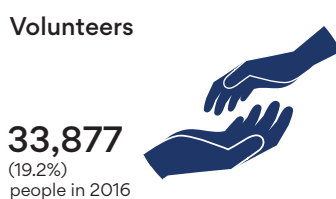
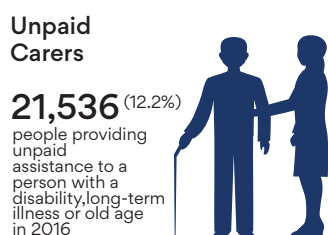
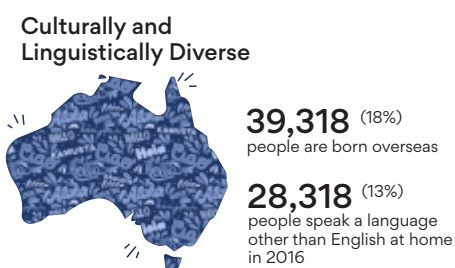
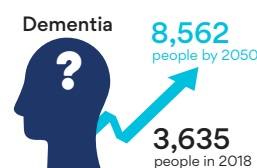
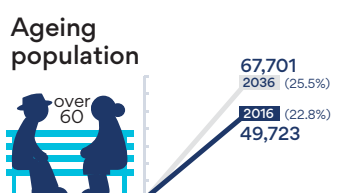
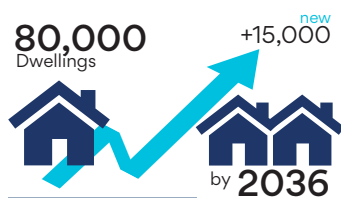
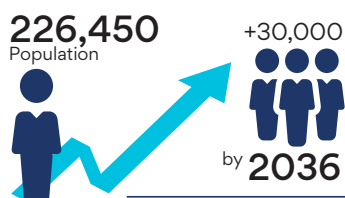
PLAY SPACE DISTRIBUTION

Most residents of the Sutherland Shire are within 10 minutes' walk (about 800m) of a public open space that can be used for some form of play. Analysis shows there is a fairly even distribution of playgrounds across the Shire although for some neighbourhoods, residents are further than 10 minutes walk from a play space.

High density growth precincts - where people have less private open space for play - should be afforded a higher level of access to community play spaces. With further analysis, Council will need to plan and acquire suitable spaces to meet this need.

OUR COMMUNITY AT A GLANCE

The demographic profile of our community is changing and this affects how our play spaces are used and what is most needed. Council's provision of play spaces will be guided according to current and future needs, address challenges and best mobilise community assets. The following figures describe our community and some of the changes we are experiencing.³

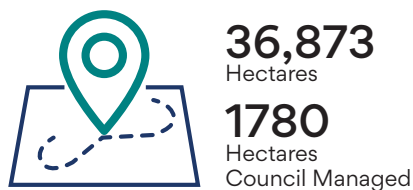


³ Sutherland Shire Council, 'Informing Strategy, Community Development 2021-2031', Sutherland Shire Council, Sutherland NSW, Sutherland Shire Council, 2020, <<https://www.sutherlandshire.nsw.gov.au>>, (accessed 20 December 2020).

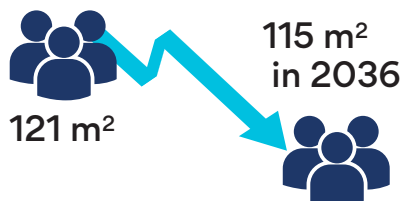
OUR PLAY SPACES AT A GLANCE

The Shire has an extensive network of parks, play spaces and other facilities to respond to our community's growing and changing needs for play.

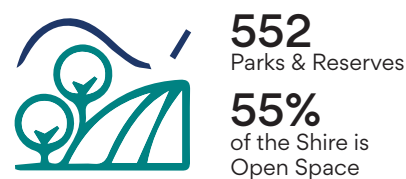
Open Space



Open Space Per Person



Parks & Reserves



Skate



Playgrounds



Outdoor Courts



Fitness



Toilets



Furniture



92%

agreed that the
OUTDOOR SPACES
are a key part of the
Shire's identity⁴

We are proud of our strong connections and productive multi-agency partnerships within our community to ensure we can continue to realise our vision of a connected and safe community that respects people and nature, enjoying active lives in a strong local economy.

AGENCIES AND STAKEHOLDERS

The Open Space portfolio is supported by and supports a wide range of agencies and stakeholder groups.

These include:

- Greater Sydney Commission
- NSW Department of Planning, Industry and Environment
- NSW Department of Communities and Justice
- NSW Ministry of Health
- Community organisations, associations and clubs
- Interest groups and facility users such as Scouts and Guides, Illawarra Bee Keepers, Sylvanvale
- Volunteers, including Bushcare and club officials
- Community Members, including tourists





CONSULTATION

Council has worked closely with the Sutherland Shire community to produce this Strategy, with over 700 people contributing to its development, including Government, inter-agencies, committees, reference groups, and community organisations.

INFORMING STRATEGY CONSULTATION

We consulted our community on a range of issues in 2018 and the responses gained helped us to prepare the 2019 Informing Strategy - Open Space and Recreation. The consultation included a survey⁴ in which 2408 respondents indicated they typically visited the following facilities at least once a month:

- 84% visit parks
- 69% visit bushland, creeks, waterways
- 65% visit patrolled beaches
- 60% visit sports fields and courts
- 57% visit pools, leisure centres
- 24% visit boat ramps
- 45% visit playgrounds
- 31% visit cycleways

42% of respondents agreed that “When it comes to outdoor spaces, people in the Shire are spoilt for choice”.

COMMUNITY CONSULTATION DEC 2020-FEB 2021

From late December 2020 to February 2021 we asked our community about Council’s open space and play services - what people like about existing spaces, how they are used, and how can they be improved. The engagement gathered responses from 711 people living across the Shire and has helped us to develop this strategy.

The following is a summary of the range of views that we heard:

- 💬 We need to cater to a wide range of kids
- 💬 Look at facilities for adults and older residents such as outdoor gyms.
- 💬 We need more shaded areas to sit. Better toilets.
- 💬 Destination parks are so fantastic for kids but there are not enough.
- 💬 We need more small children friendly skate parks.
- 💬 Would love to see a skate park in Miranda
- 💬 Water play would be amazing.
- 💬 Council does a great job with so many diverse parks and spaces. We are so lucky. Thank you

COMMUNITY CONSULTATION JUL 2020-AUG 2021

From July to August 2021 we consulted again with our community, placing the draft version of this Strategy on public exhibition and asking for feedback. The response of the community was limited but generally supportive and only minor corrections to the draft were made as a result.

COMMUNITY ENGAGEMENT REPORT

Our Community Engagement Report provides a summary of the consultations completed in early 2021 and August 2021 and highlights key issues and themes related to play spaces that this Strategy aims to address. It’s available online via our [Join the Conversation website](#).

⁴ Sutherland Shire Council, ‘Informing Strategy, Open Space and Recreation 2021-2031’, Sutherland Shire Council, Sutherland NSW, Sutherland Shire Council, 2019, (accessed 20 December 2020)

⁵ Ruby Cha Cha, A Shout Out to the Shire: Making Decisions for the Future, report to Sutherland Shire Council, Surry Hills, NSW, 2018.

DRIVERS OF CHANGE



There are a number of emerging trends, challenges and opportunities as we plan for the future of our play spaces:

BEST PRACTICE PLANNING AND DESIGN

The NSW Government's draft Greener Places Design Guide contains best practice guidelines for the planning and design of play spaces for children, youth and adults.⁶ Further help is found in the NSW Government's guideline, Everyone Can Play, which is all about creating play spaces that are more inclusive of everyone in the community.⁷ Both these documents have been used to inform the Service Standards introduced by this Strategy. ([See Appendix](#))

POPULATION GROWTH

Sutherland Shire is predicted to grow by 25,500 people by 2036, with growth mainly located in and around our high density growth precincts in Sutherland, Kirrawee, Miranda, Caringbah, Cronulla, Jannali, Engadine, and Gymea.⁸ Residents of these areas will require access to a range of play opportunities within walking distance of their homes.



AGEING POPULATION

By 2036 it is expected that over a quarter of the Shire's population will be aged over 60 years - an increase of about 12,000 people.⁹ There is a challenge in meeting the play needs of this significant group, which has greater accessibility needs and is increasingly involved in the everyday care of grandchildren. There is an opportunity too - the opportunity to create play spaces that bring younger and older generations together.

TRENDS IN HOUSING

The number of dwellings in the Shire is increasing with a trend towards more compact forms of housing. This means that play activities which traditionally took place in private backyards will more often take place within the public realm, placing added demands on our parks and play spaces.

6 Government Architect NSW, Draft Greener Places Design Guide: Open Space for Recreation, Urban Tree Canopy, Bushland and Waterways, Issue No. 04, NSW Government, 2020, <https://www.governmentarchitect.nsw.gov.au/policies/greener-places>, (accessed 20 Dec 2020)

7 NSW Government, Everyone Can Play: A Guideline to Create Inclusive Playspaces, 2019, <<https://www.planning.nsw.gov.au/everyonecanplay>>. (accessed 17 Sep 2020).

8 .id (Informed Decisions) Sutherland Shire Council Population Forecast [website], <https://forecast.id.com.au/sutherland>, (accessed 20 Dec 2020).

9 Ibid.

TRENDS IN SPORT AND RECREATION

Organised sport is popular in Sutherland Shire. But sports are evolving. Some codes like football are growing, while others are in decline, and we have witnessed the rising popularity of walking and personal fitness activities. Nationally, participation in non-sport related recreation has increased significantly (by more than 20%) over the last 20 years, while participation in organised sport has remained steady.¹⁰

INCLUSIVE PLAY

Everyone should have the opportunity to play and every play space should be a fun, welcoming and comfortable environment. But not all play settings can cater for everyone. The challenge and opportunity is to work together to do what we can to make play spaces more inclusive where we can.

PLAY FOR CHILDREN

Play is important for all children of all ages. We need play spaces that recognise the different needs of different age groups from the very young to older children and tweens.

PLAY FOR YOUTH

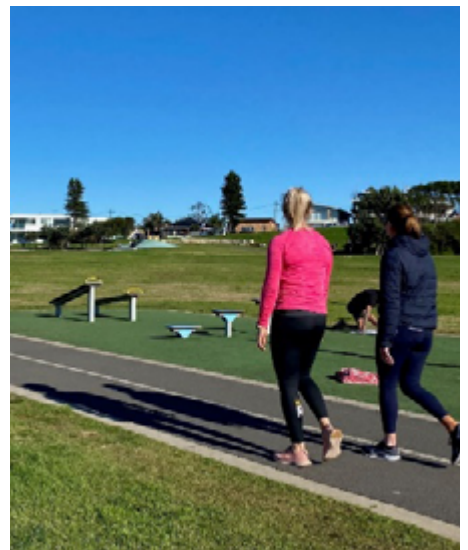
Teens and young adults also need a variety of play spaces - spaces where they can be challenged physically (with activities such as skating, sport courts, parkour and like) and spaces where they can be comfortable and socialise in a safe environment.

PLAY FOR ADULTS

We know that walking and personal fitness activities are the two most popular 'play' or recreational activities for adults in Australia and we see this trend also in Sutherland Shire. The challenge is how to best support this trend within our network of open spaces and play spaces.

PLAY SPACE FUNDING

The provision of play spaces across the Shire requires significant funding to maintain. Council is experiencing tighter financial conditions and there is changing state government emphasis to District-wide consideration in the planning and funding for open space and recreation.



¹⁰ The Clearing House for Sport, Clearing House for Sport: Ausplay Results, Participation Trends in Australia [website], <<https://www.clearinghouseforsport.gov.au/research/ausplay/results>>, (accessed 20 Dec 2020).

Play spaces now and for the future

Play spaces are opportunities for communities to connect and build relationships. It is important as our neighbourhoods grow and change that everyone can access opportunities for play. We aim to ensure that play spaces are distributed equitably across the Shire and can be easily accessed by everyone, both now and in the future.

To do this we will:

- Engage with our communities
- Improve play space distribution for equity and access



IMPLEMENTATION PLAN

Implementation Actions		Delivery Stream	Collaboration	Year					On Going
				22/ 23	23/ 24	24/ 25	25/ 26	5+ Yrs	
Engage with our communities									
1.1.1	Engage and work with our communities in the planning, delivery and management of Council services for play.	Asset Services	Communication and Engagement						<div></div>
Improve play space distribution for equity and access									
1.2.1	Apply the Play Service Standards to provide greater equity and access in the distribution of play spaces.	Asset Services							<div></div>
1.2.2	Analyse current play space distribution and demographic data for clusters and gaps and recommend play spaces for acquisition, creation, service level change and removal, considering equity and access needs.	Asset Services	Strategic Planning, Traffic and Public Domain Services, Property Services	<div></div>	<div></div>				
1.2.3	Collaborate in the preparation of the precinct-based centre plans to better meet the community’s current and future needs for passive recreational play space services.	Strategic Planning	Asset Services, Traffic and Public Domain Services, Property Services	<div></div>					

Area of Focus

2

Play spaces for everyone

Play is not just for the young. Play can be for everyone – young and old, families and carers, and people of all abilities. We want to provide play spaces that are more inclusive and that bring us all together. We want to provide a variety play opportunities to suit different needs and promote active and healthy lifestyles.

To do this we will:

- Improve accessibility and safety
- Develop diverse play spaces
- Enhance the quality of play spaces



IMPLEMENTATION PLAN

Implementation Actions		Delivery Stream	Collaboration	Year					On Going
				22/ 23	23/ 24	24/ 25	25/ 26	5+ Yrs	
Improve accessibility and connectivity									
2.1.1	When renewing play spaces, undertake improvements to accessibility and safety informed by audit results and guided by the Play Service Standards.	Asset Services							<div></div>
Develop diverse play spaces									
2.2.1	When renewing play spaces, ensure that neighbourhoods are provided with a diverse range of settings and opportunities for play, including various types of play space for children, youth and adults.	Asset Services	Strategic Planning, Business, Sport and Community Services, Property Services						<div></div>
2.2.2	Create opportunities for play in bushland and other natural environments.	Asset Services	Strategic Planning, Property Services	<div></div>	<div></div>				
2.2.3	Analyse current play space distribution and recommend future priorities for implementing youth recreation spaces and fitness and exercise spaces for adults aligned with the Play Service Standards.	Asset Services	Strategic Planning, Business, Sport and Community Services, Property Services	<div></div>	<div></div>				
Enhance the quality of play spaces									
2.3.1	Prepare best practice design guidelines for play spaces to support the application of the Play Strategy and its Service Standards.Incorporate the guidelines into Council’s Public Domain Design Manual.	Asset Services	Building Operations, Parks Operations, Waste Services			<div></div>			

Area of Focus

3

Best value for the community

Play spaces are valuable community assets that require significant funding to maintain. It is important that our investment and management of play spaces obtains the best value for our community over the long term. We want to optimise opportunities for the community to be active and connect to nature through play.

To do this we will:

- Create community benefit
- Manage and maintain open space



IMPLEMENTATION PLAN

Implementation Actions		Delivery Stream	Collaboration	Year					On Going
				22/ 23	23/ 24	24/ 25	25/ 26	5+ Yrs	
Create community benefits									
3.1.1	Maintain and develop play spaces in accordance with the Play Service Standards.	Asset Services	Building Operations, Parks Operations, Waste Services, Project Services						<div></div>
3.1.2	Review Asset Management Plans to ensure design and investment decisions optimise whole of life costs and improve sustainability outcomes.	Asset Services	Financial Services						<div></div>
Manage and maintain play spaces									
3.2.1	Manage and maintain play spaces in a cost-effective manner and in accordance with the Play Strategy and Council’s asset management framework.	Asset Services	Financial Services						<div></div>

APPENDIX

SERVICE STANDARDS

SERVICE STANDARDS

A service standard is a set of performance criteria to guide the planning, assessment and provision of play facilities and services. This appendix contains service standards for the following play facilities and services:

- Children's play spaces
- Youth recreation spaces
- Fitness and exercise spaces

The service standards incorporate three main considerations for service delivery:

DISTRIBUTION

We want to make it easier and fairer for more people to access play spaces across Sutherland Shire. To do this most of our service standards are structured using a hierarchy, often based on distance from homes. This results in a more equitable distribution of services.

Smaller scale or lower order services are provided at the Local level, which is set at walkable distances from homes. Larger scale or higher quality play spaces are provided at the larger District or Regional levels. These catchments are set at longer distances from homes and assume travel by car or public transport.

CONNECTIVITY AND ACCESSIBILITY

We want to deliver play spaces that are more accessible and inclusive. So in addition to addressing distribution, our service standards consider the actual physical connections and conditions that enable access for everyone, including people with different abilities and from diverse cultures and language groups.

QUALITY

We want to deliver high quality play spaces that best meet the needs of our community. The service standards address quality by defining the type of play space in terms of its intended purpose, user focus, scale and level of service provision, and by setting further requirements, where relevant, for the following criteria:

- land size and shape
- type of play facilities to be provided (or key features, considerations and possible examples)
- provision of shade
- support features to be provided
- co-location of other services



CHILDRENS PLAY SERVICE STANDARDS

Childrens Play Type	Regional	District	Local	Community Buildings
Description	Destination or long-stay play spaces - premium quality, inclusive, multi-featured and catering to a range of age groups	Destination or long-stay play spaces - high quality, inclusive, multi-featured and catering to a range of age groups	Basic quality, short-stay playgrounds or landscape play spaces with a focus on very young or young children.	Flexible play spaces for hirers including play groups, commercial operators, private events and community organisations.
Possible locations	Regional parks and bushland	District parks and bushland	Local parks and bushland	Community buildings
Distance/travel from most homes	Within 2 kilometres of most homes	Within 2 kilometres of most homes	Within 10 minutes walk from most homes. Ideally within 5 minutes walk in high density areas.	Not applicable
Connectivity & accessibility	<ul style="list-style-type: none"> connected to active transport network 500m to public transport parking available accessible location 	<ul style="list-style-type: none"> connected to active transport network 500m to public transport parking available accessible location 	<ul style="list-style-type: none"> connected to active transport network pram friendly location 	<ul style="list-style-type: none"> connected to active transport network pram friendly location
Play facilities	<ul style="list-style-type: none"> large scale multi age-group, all-abilities play space mostly synthetic soft-fall materials barrier when play space is within 10m of busy road 	<ul style="list-style-type: none"> medium scale multi-age group with at least one inclusive play element mix of synthetic and natural soft-fall materials barrier when play space is within 10m of busy road 	<ul style="list-style-type: none"> focus on single age group possible inclusive play opportunity natural soft-fall materials barrier when play space is within 10m of busy road <p>Possible examples:</p> <ul style="list-style-type: none"> landscape play area nature play area in bushland children's garden small, limited feature playground 	<ul style="list-style-type: none"> Focus on flexible use A space for the hirer to bring play items or equipment to suit a variety of purposes mix of hard and soft surfaces no attenuated softfall fencing when play space is nearby a busy road

Chidrens Play Type	Regional	District	Local	Community Buildings
Shade	Shade to the majority of the play space activity zones and central seating areas.	Shade to key play space activity zones and central seating areas.	Natural shade where available to key play space activity zones and central seating areas.	Shade provided within the building alongside the outdoor play space.
Support facilities	<ul style="list-style-type: none"> • toilets • water station • seats • picnic facilities • waste bins • signage 	<ul style="list-style-type: none"> • toilets • water bubbler • seats • picnic facilities • waste bins • signage 	<ul style="list-style-type: none"> • water bubbler • seats • waste bins • signage 	<ul style="list-style-type: none"> • signage • storage cupboards
Co-located facilities	<ul style="list-style-type: none"> • Youth recreation space • Regional recreation space • possible café, kiosk or food truck • possible sport or community facilities 	<ul style="list-style-type: none"> • possible District level active recreation space • possible youth recreation space • possible sport or community facilities 	Local recreation space	Community building



YOUTH PLAY SERVICE STANDARDS

Youth Play Type	District
Description	Large, youth focused destination space (13 – 20 years age group) providing opportunities for both active recreation and social gathering
Distribution	Most homes within 2km
Possible locations	<ul style="list-style-type: none"> Regional level parks and bushland District level parks and bushland
Connectivity & accessibility	<ul style="list-style-type: none"> connected to active transport network 500m to public transport accessible location and facilities
Facilities	Possible examples: <ul style="list-style-type: none"> skate park or skate elements parkour elements exercise and fitness equipment sports courts, half courts, exercise area provided as part of a district park youth friendly space with 60m x 40m informal sports field versatile, technology supported and inclusive group spaces
Shade	Shade to key activity zones and central seating areas.
Minimum area	Not Applicable
Support facilities	<ul style="list-style-type: none"> toilets drinking water seats waste bins



EXERCISE SERVICE STANDARDS

Exercise Type	District
Description	District and local level exercise and fitness opportunities for individuals that are free of charge and located in park space
Distribution	Most homes within 800m
Possible locations	<ul style="list-style-type: none"> Regional and District level parks and bushland Local level parks and linear green space
Connectivity & accessibility	<ul style="list-style-type: none"> connected to active transport network 500m to public transport accessible location
Facilities	Possible examples: <ul style="list-style-type: none"> Exercise stations (no equipment) along a linear or circuit pathway in Local linear green space Exercise site or exercise stations along a pathway circuit (no equipment) in a Local level park Exercise sites or pathway circuit stations (with equipment) in a District or Regional level park
Minimum area	Varies
Support facilities	<ul style="list-style-type: none"> wayfinding signs exercise guide signs drinking water seats waste bins







4-20 Eton Street, Sutherland NSW 2232
Locked Bag 17, Sutherland NSW 1499
T 02 9710 0333
ssc@ssc.nsw.gov.au
sutherlandshire.nsw.gov.au

