

SUTHERLAND SHIRE

# OPEN SPACE

## STRATEGY AND IMPLEMENTATION PLAN

---

2021 - 2031

At Sutherland Shire Council we do more than serve our community - we are our community.

We understand that our natural landscapes - the bays, beaches and bush - and our love of outdoor living gives us a unique energy that sets us apart from anywhere else.

This translates into an active community - and a living energy - that propels us forward.

To align our culture to our community we are active, evolving, respectful and collaborative - this energy can be seen in everything we do. From having a can-do attitude, to embracing opportunity and change, being people-centred and working together as one.

That's why Sutherland Shire is a place for life - its vibrancy brings people to life and makes it a place they want to stay forever.

It's our role to enhance the spirit of our area and its people.

Prepared by  
Sutherland Shire Council

October 2021

Contact Details  
Sutherland Shire Council  
4-20 Eton Street  
Sutherland NSW  
Australia

Locked Bag 17,  
Sutherland 1499

T 02 9710 0333  
[ssc@ssc.nsw.gov.au](mailto:ssc@ssc.nsw.gov.au)  
[sutherlandshire.nsw.gov.au](http://sutherlandshire.nsw.gov.au)

© Sutherland Shire Council 2021

---

## Acknowledgement of Country

Sutherland Shire Council acknowledges the Dharawal speaking people who are the Traditional Custodians of the Land of Sutherland Shire, and pays respect to their culture, history and Elders past, present and emerging, and extends that respect to other Aboriginal and Torres Strait Islander people.



# CONTENTS

Introduction .....	4
Our Vision .....	5
Our Principles .....	6
Open space and recreation At a Glance.....	7
Our Focus .....	7
Our Planning Process .....	8
Our Strategic Approach .....	9
Strategic Development .....	9
Delivering the Strategy.....	10
Strategy Objectives and Measures.....	11
Context .....	12
Our Community At a Glance.....	14
Our Open Spaces At a Glance.....	15
Consultation.....	17
Drivers of Change .....	18
Areas of focus and Implementation plans.....	20
Appendix Service Standards .....	30

An aerial photograph of a coastal town, likely Sutherland Shire. The image shows a mix of urban development, including modern buildings and parking lots, alongside a large, sandy beach and green spaces. The text is overlaid on the left side of the image.

# INTRODUCTION

The Open Space Strategy and Implementation Plan is a long term plan, which sets out key outcomes aimed at enhancing active lifestyles in the unique and valued open spaces of the Sutherland Shire.

As a key strategy within Council's Integrated Planning and Reporting framework, the Open Space Strategy and Implementation Plan is directly aligned to our Community Strategic Plan.

The Strategy considers the future of our open spaces. In this context, open space is land that is accessible to the public for recreation, and which is owned or managed by Sutherland Shire Council.

The Strategy outlines four key areas of focus centred on planning for open spaces. These support our community's needs and lifestyles, now and into the future, by providing open space for everyone, by ensuring we get best value for our open space and by protecting our environment and heritage.

A collaborative approach and ongoing consultation with our community will inform our ongoing planning and implementation of the Strategy.

The activities that Council will deliver to service our open spaces and to progress this Strategy are included in the Implementation Plan and Appendix. The implementation actions will be detailed in Council's Delivery Program and annual Operational Plans.



An aerial photograph of a coastal park. In the foreground, a large, curved green field is visible, with several people scattered across it. To the left of the field is a paved path that curves along the edge of a sandy beach. The background shows a dense line of trees and a residential area with houses and parked cars.

# OUR VISION

*Open spaces for everyone, now and for the future, enhancing active lifestyles connected to nature*



# OUR PRINCIPLES

---

## CHARACTER

The character, heritage and environmental values of our open spaces will be preserved, protected and celebrated.

---

## SUSTAINABILITY

Open spaces will be planned, maintained, and evolved to best meet the needs of the present without compromising future generations.

---

## COLLABORATION

We will work together to achieve better outcomes in our open spaces and reflect the values of our community.

---

## EQUITY

The planning, funding and utilisation of open spaces must be fair and reasonable to consider all ages, abilities and interests.

---

## SAFETY

Safety is optimised by applying good design and management to our open spaces.

---

## ACCESSIBILITY

Open spaces should be accessible to everyone. We want everyone to be able to enjoy and use our open spaces and recreation facilities.



# OUR FOCUS



## Area of Focus

### Open space now and for the future

As our community grows, we will look to maintain the active lifestyles and connections to nature that we currently enjoy, while planning open space to best meet our emerging and future needs.

Open space will be distributed fairly and can be accessed by everyone, both now and in the future.



## Area of Focus

### Open space for everyone

We will recognise and respond to our community's changing recreation needs and priorities. We want everyone to be able to enjoy our open spaces regardless of their age, ability, cultural background or interest. We want more opportunities for people to participate in recreation that will lead to improved health & well being.



## Area of Focus

### Best value for the community

Our open space investment and management will derive the best value for our community over the long term. We want to optimise the use of our open spaces to provide more and better opportunities for the community to be active and connect to nature.



## Area of Focus

### Protecting environment and heritage

Our open spaces are intertwined with the natural environment and our built and Aboriginal cultural heritage. We want to protect and enhance our natural areas and heritage values. We want to engage with the idea that if we care for Country it will care for us.

Council's Plans and Strategies integrate and work together to make Sutherland Shire a connected and safe community that respects people and nature, enjoying active lives in a strong local economy.



# OUR STRATEGIC APPROACH

Council has an integrated approach. Council's Plans and Strategies work together to make the Sutherland Shire a liveable place for all people.



The Open Space Strategy and Implementation Plan expands on Our Community Strategic Plan and sets out approaches taken by Council to sustain a liveable place with a high quality of life. A number of intersecting and 'supporting documents' are connected and sit alongside the Open Space Strategy and Implementation Plan. These include:

- Play Strategy and Implementation Plan
- Sport Strategy and Implementation Plan
- Catchment and Waterways Strategy
- Active Transport Strategy
- Leisure Centres Strategy

Some of the above were still in development at the time of publication of this document.

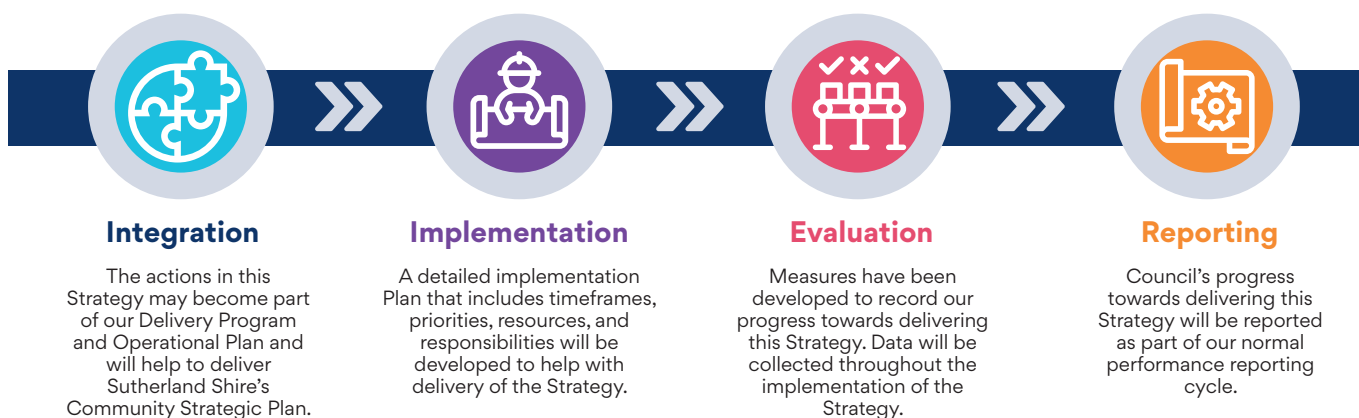
## STRATEGIC DEVELOPMENT

In 2019 Council adopted the Informing Strategy - Open Space and Recreation. In 2021 Council commenced developing three strategy and implementation plans to expand upon and replace the Informing Strategy. The three Strategy and Implementation Plans are Open Space, Play (this document) and Sport.

Following analysis of existing network of play spaces, We consulted with Councillors, Council officers and the community to develop our vision, principles, focus areas and service delivery models. Further workshops were then held to develop strategies and actions to incorporate into this Strategy and Implementation Plan.



# DELIVERING THE STRATEGY



## INTEGRATION

This Play Strategy and Implementation Plan will integrate with our four year Delivery Program and annual Operational plans, supporting our delivery of Sutherland Shire's Community Strategic Plan.

## IMPLEMENTATION

The delivery of the Strategy will be guided by the Implementation Plan contained within it. The Implementation Plan sets out a program of actions for each of the Focus Areas and includes timeframes and responsibilities.

The [Appendix](#) contains Service Standards for Council's provision of open space and recreation services.

## EVALUATION

Monitoring and evaluating our delivery of the Strategy will be ongoing. We will use a range of methods to help us measure the Strategy's outcomes. These methods may include demographic data, participation/usage data, community and customer satisfaction surveys, focus groups and case studies.

## REPORTING

We will report on the delivery of this Strategy in the following ways:

- Occasional reporting via social media and Our Shire newsletter
- Half yearly reporting to Council
- Annual Report
- Major review in 2025 prior to development of the next Open Space Strategy and Implementation Plan

## RESOURCING

Most of the actions in this Strategy will not require additional funding and will be included as part of our everyday work. Some actions will require additional funding and these will be considered as part of Council's annual budget and planning process. We may apply for external funding to help us deliver the actions in this Strategy.



# STRATEGY OBJECTIVES AND MEASURES

WE AIM TO	WE WILL TRACK OUR PROGRESS AGAINST
Provide open space that is distributed equitably across the Shire and can be accessed by everyone, both now and in the future.	<ul style="list-style-type: none"> <li>90% of all houses within 800 metres (10 minute walk) of quality open space, and preferably a 5 minute walk for high-density growth areas.</li> </ul>
Create more opportunities for people to participate in recreation that will lead to improved health & well-being.	<ul style="list-style-type: none"> <li>The number of new and upgraded open spaces.</li> </ul>
Optimise the use of our open spaces to provide more and better opportunities for the community to be active and connect to nature.	<ul style="list-style-type: none"> <li>The number of additional functions created for our open spaces.</li> </ul>
Protect and enhance our natural areas and heritage values.	<ul style="list-style-type: none"> <li>The number and size of natural areas.</li> <li>The number of natural areas and heritage sites actively protected.</li> <li>The funds allocated to protect natural areas and heritage values.</li> <li>Implementation of the Aboriginal Cultural Heritage Management Plan.</li> <li>Completion of Conservation Management Plans for all relevant heritage items.</li> </ul>





# CONTEXT

This Strategy fits within a NSW Government and Council planning context.

## NSW PLANNING CONTEXT

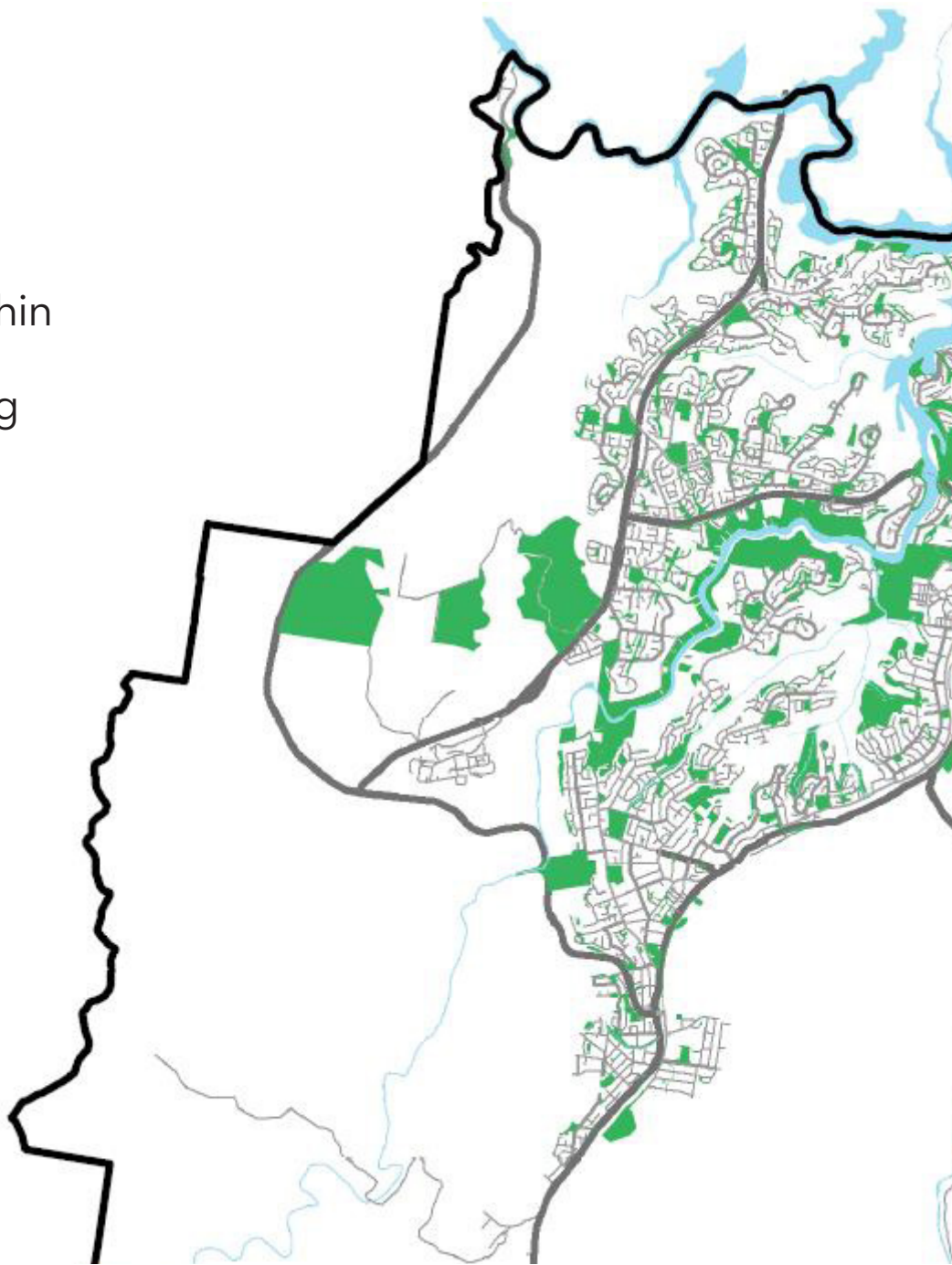
This Play Strategy fits within a planning context for open space at State and regional levels. Our Shire is unique, yet we are part of NSW, the Sydney Region and its South District.

Greener Places<sup>1</sup> outlines the NSW Government's position on green infrastructure and establishes principles for the strategic provision of open space at regional and local levels, which are reflected in this Play Strategy.

This Strategy aligns with the Greater Sydney Commission's Greater Sydney Region Plan and South District Plan.<sup>2</sup> These strategic land use plans include directives for the distribution of open space and guide plans at the local government level.

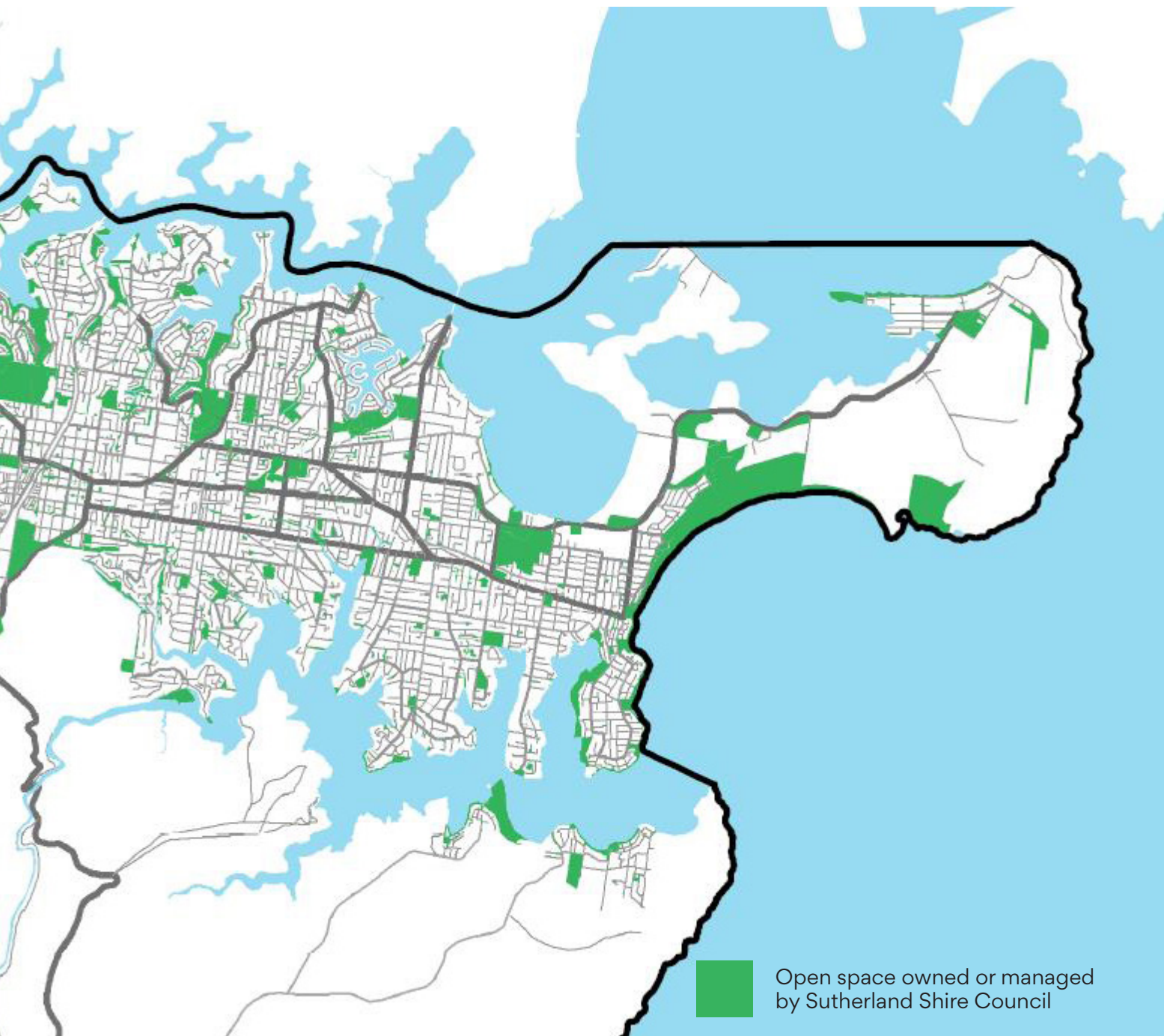
<sup>1</sup> Government Architect NSW, Greener Places [website], <<https://www.governmentarchitect.nsw.gov.au/policies/greener-places>>, (accessed 20 December 2020).

<sup>2</sup> Greater Sydney Commission, Metropolis of Three Cities [website], <<https://www.greater.sydney/metropolis-of-three-cities>>, (accessed 20 December 2020).



This Strategy is highly influenced by the following key outcomes from these plans:

- Quality open space is easily accessible for recreation.
- The provision of open space keeps pace with expected population growth and increased urban density.
- Open space contributes to an improvement in urban tree canopy.
- Open space enables connections for walking, safe cycling and social interaction.
- Open space supports habitat and biodiversity.
- Open space connects people to nature within a sustainable environment



## SUTHERLAND SHIRE'S OPEN SPACES

Sutherland Shire has a wonderful legacy of open space and waterways that sets it apart from much of Greater Sydney. The total land area of Sutherland Shire is 36,873 hectares.

Sutherland Shire contains 20,356 hectares of bushland and natural areas which are accessible to the public (includes four National Parks, a State Recreation Area and a Nature Reserve).

Council supports our community's active lifestyles through its sporting fields, recreation facilities and parkland. Council manages around 1,780 hectares of open space.

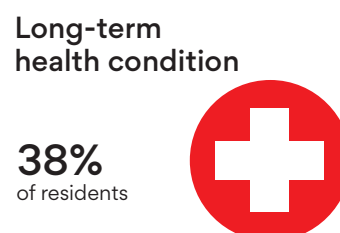
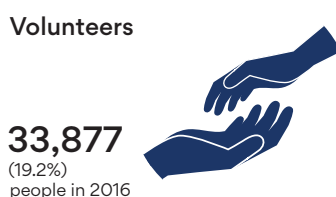
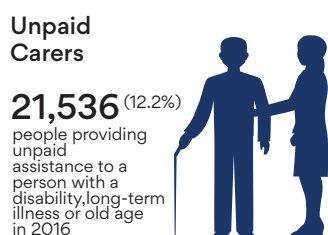
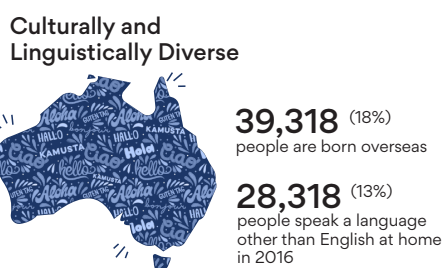
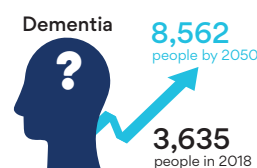
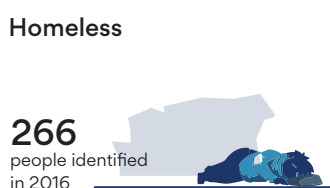
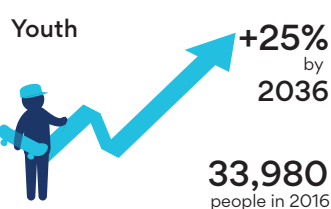
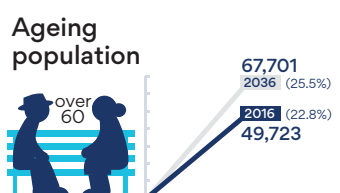
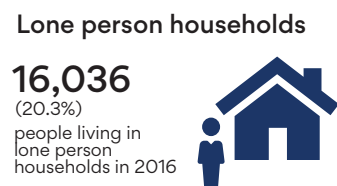
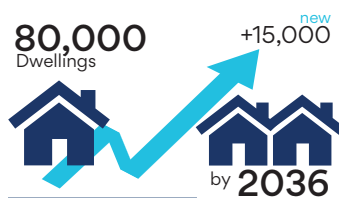
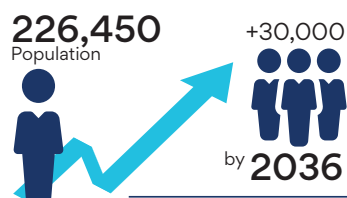
## OPEN SPACE DISTRIBUTION

Almost all areas of the Sutherland Shire are within 10 minutes' walk (about 800m) of a public open space that can be used for passive recreation. This is a very high level of service provision by recreational planning standards. The exceptions are some areas within locations at the fringes of Sutherland Shire on peninsulas or ridges, often adjacent to bushland.

High density growth precincts require a higher level of access to open space and Sutherland Shire's major centres generally perform well when a 200m walking catchment is applied.

# OUR COMMUNITY AT A GLANCE

The demographic profile of our community is changing and this affects how our play spaces are used and what is most needed. Council's provision of play spaces will be guided according to current and future needs, address challenges and best mobilise community assets. The following figures describe our community and some of the changes we are experiencing.<sup>3</sup>



<sup>3</sup> Sutherland Shire Council, 'Informing Strategy, Community Development 2021-2031', Sutherland Shire Council, Sutherland NSW, Sutherland Shire Council, 2020, <<https://www.sutherlandshire.nsw.gov.au>>, (accessed 20 December 2020).



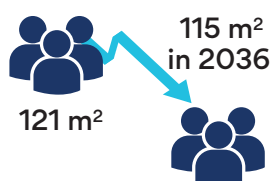
# OUR OPEN SPACES AT A GLANCE

The Shire has an extensive network of parks, play spaces and other facilities to respond to our community's growing and changing needs for play.

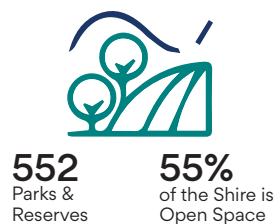
## Open Space



## Open Space Per Person



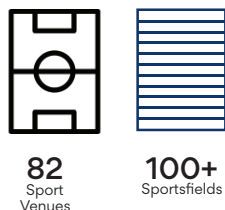
## Parks & Reserves



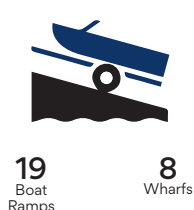
## Bushland



## Sport



## Foreshore



## Pools



## Small Watercraft



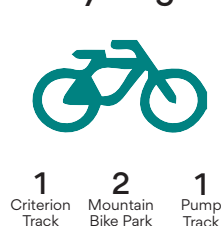
## Skate



## Playgrounds



## Cycling



## Dog Exercise



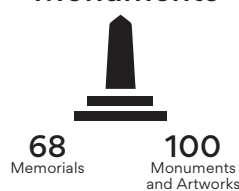
## Golf Courses



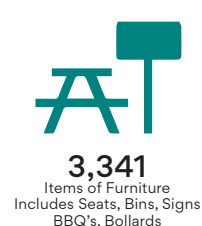
## Toilets



## Memorials & Monuments



## Furniture



# 92%

agreed that the  
**OUTDOOR SPACES**  
are a key part of the  
Shire's identity<sup>4</sup>

We are proud of our strong connections and productive multi-agency partnerships within our community to ensure we can continue to realise our vision of a connected and safe community that respects people and nature, enjoying active lives in a strong local economy.

## AGENCIES AND STAKEHOLDERS

Our open space portfolio is supported by and supports a wide range of agencies and stakeholder groups.

These include:

- Greater Sydney Commission
- NSW Department of Planning, Industry and Environment
- NSW Department of Communities and Justice
- NSW Ministry of Health
- Community organisations, associations and clubs
- Interest groups and facility users such as Scouts and Guides, Illawarra Bee Keepers, Sylvanvale
- Volunteers, including Bushcare and club officials
- Community Members, including visitors and tourists







# CONSULTATION

Council has worked closely with the Sutherland Shire community to produce this Strategy, with over 700 people contributing to its development, including Government, inter-agencies, committees, reference groups, and community organisations.

## INFORMING STRATEGY CONSULTATION

We consulted our community on a range of issues in 2018 and the responses gained helped us to prepare the 2019 Informing Strategy - Open Space and Recreation. The consultation included a survey<sup>5</sup> in which 2408 respondents indicated they typically visited the following facilities at least once a month:

- 84% visit parks
- 69% visit bushland, creeks, waterways
- 65% visit patrolled beaches
- 60% visit sports fields and courts
- 57% visit pools, leisure centres
- 24% visit boat ramps
- 45% visit playgrounds
- 31% visit cycleways

42% of respondents agreed that “When it comes to outdoor spaces, people in the Shire are spoilt for choice”.

## COMMUNITY CONSULTATION DEC 2020-FEB 2021

From late December 2020 to February 2021 we asked our community about Council’s open space and play services - what people like about existing spaces, how they are used, and how can they be improved.

The engagement gathered responses from 711 people living across the Shire and has helped us to develop this strategy. The following is a summary of the range of views that we heard:

- 💬 We need to cater to a wide range of kids
- 💬 Look at facilities for adults and older residents such as outdoor gyms.
- 💬 We need more shaded areas to sit. Better toilets.
- 💬 Destination parks are so fantastic for kids but there are not enough.
- 💬 We need more small children friendly skate parks.
- 💬 Would love to see a skate park in Miranda
- 💬 Water play would be amazing.
- 💬 Council does a great job with so many diverse parks and spaces. We are so lucky. Thank you

## COMMUNITY CONSULTATION JUL 2020-AUG 2021

From July to August 2021 we consulted again with our community, placing the draft version of this Strategy on public exhibition and asking for feedback. The response of the community was limited but generally supportive and only minor corrections to the draft were made as a result.

## COMMUNITY ENGAGEMENT REPORT

Our Community Engagement Report provides a summary of the consultations completed in early 2021 and August 2021 and highlights key issues and themes related to play spaces that this Strategy aims to address. It’s available online via our [Join the Conversation website](#).

<sup>4</sup> Sutherland Shire Council, 'Informing Strategy, Open Space and Recreation 2021-2031', Sutherland Shire Council, Sutherland NSW, Sutherland Shire Council, 2019, <<https://www.sutherlandshire.nsw.gov.au>>, (accessed 20 December 2020).

<sup>5</sup> Ruby Cha Cha, A Shout Out to the Shire: Making Decisions for the Future, report to Sutherland Shire Council, Surry Hills, NSW, 2018.

# DRIVERS OF CHANGE



There are a number of emerging trends, challenges and opportunities as we plan for the future of our open spaces:

## PLANNING STANDARDS

The Greater Sydney Commission's Sydney Region Plan and South District Plan (which include Sutherland Shire) highlight the importance of open space in achieving a more liveable Sydney.<sup>6</sup> The plans contain directives aimed at improving the provision of quality open space within walking distance of homes.

## POPULATION GROWTH

Sutherland Shire is predicted to grow by 25,500 people by 2036, with growth mainly located in and around our major centres.<sup>7</sup> Residents of these areas will require improved access to a range of parks and recreation opportunities within walking distance of their homes.



## AGEING POPULATION

It is expected by 2036 that over a quarter of the Shire's population will be aged over 60 years.<sup>8</sup> An ageing population has different open space needs to a younger population and typically requires a greater focus on accessibility and opportunities for passive recreation.

## TRENDS IN SPORT

Organised sport is evolving. Participation rates in sport are changing. Some sport codes are growing in popularity, while others are in decline, with corresponding changes in demand for facilities and fields.



## CARING FOR COUNTRY

Our open spaces are rich in Aboriginal cultural heritage and inseparable from Country. This Strategy presents an opportunity to sustainably connect with and care for Country.

## TRENDS IN HOUSING

The trend towards more compact forms of housing means that many activities that traditionally took place in private backyards (e.g. children's birthday parties, BBQs or vegetable gardening) will shift to the public realm, placing added demands on our parks.



<sup>6</sup> Greater Sydney Commission, Metropolis of Three Cities [website], <<https://www.greater.sydney/metropolis-of-three-cities>>, (accessed 20 December 2020).

<sup>7</sup> .id (Informed Decisions) Sutherland Shire Council Population Forecast, .id (Informed Decisions), 2021, (accessed 20 Dec 2020).

<sup>8</sup> Ibid.



## MOTORWAY IMPACTS

Development of the M6 motorway corridor will impact on a number of open spaces, sport fields and facilities, which will be costly and difficult to replace if lost.

## URBAN HEAT AND GREEN COVER

Parts of the Shire are vulnerable to urban heat - they become substantially warmer than surrounding areas because there is less green cover and more hard surfaces, which hold and radiate heat. Planting more trees within our open spaces can help reduce the effects of urban heat and lead to cleaner air, more shade and cooler, more beautiful places.

## TRENDS IN RECREATION

There are noticeable trends towards lifestyle and adventure sports and the growth of individual recreation activities<sup>9</sup> such as personal fitness and exercise with dogs. The challenge is how to best support our diverse recreation needs with diverse open spaces.

## CHANGING CLIMATE

The impacts of urban heat are expected to increase in the near future as a result of a changing climate.<sup>10</sup> This means an increased need for our open spaces to provide greater tree canopy for shade and cool. A changing climate also means more of our foreshore open spaces will be impacted by projected sea level rise.

## BIODIVERSITY IMPACTS

The biodiversity and integrity of our bushland and natural areas is under threat from unlawful clearing and encroachments, illegal dumping, feral animals, polluted stormwater, weeds and unmanaged activities and trails.

## OPEN SPACE FUNDING

The size and breadth of our open space network requires significant funding to maintain. Council is experiencing tighter financial conditions and there is changing state government emphasis to District-wide consideration in the planning and funding for open space and sport.



<sup>9</sup> The Clearing House for Sport, Clearing House for Sport: Ausplay results, Participation Trends in Australia [website], <<https://www.clearinghouseforsport.gov.au/research/ausplay/results>>, (accessed 20 Dec 2020).

<sup>10</sup> NSW Government, AdaptNSW [website], <<https://climatechange.environment.nsw.gov.au>>, (accessed 15 March 2021).



## Open space now and for the future

As our community grows, we will look to maintain the active lifestyles and connections to nature that we currently enjoy, while planning open space to best meet our emerging and future needs. We want to ensure that open space is distributed fairly and can be accessed by everyone, both now and in the future.

To do this we will:

- Engage with our communities
- Improve open space distribution for equity and access



# IMPLEMENTATION PLAN

Implementation Actions		Delivery Stream	Collaboration	Year					On Going
				22/ 23	23/ 24	24/ 25	25/ 26	5+ Yrs	
Engage with our communities									
1.1.1	Engage and work with our local communities for all open space planning and major development.	Asset Services	Communication and Engagement						<div></div>
1.1.2	Update Council’s website to provide further details on how Council manages its open spaces and how the community can provide input on future improvement.	Asset Services	Communication and Engagement	<div></div>					
Improve open space distribution for equity and access									
1.2.1	Apply the Open Space Service Standards for parks to ensure that the quantity and distribution of open space better aligns with current and future needs and provides for greater equity and accessibility.	Asset Services							<div></div>
1.2.2	Plan and deliver open space to ensure that more than 90% of all houses are within 800 metres (10 minute walk) of quality open space, and preferably a 5 minute walk for high-density growth areas.	Asset Services	Property Services, Strategic Planning						<div></div>
1.2.3	Analyse current open space distribution and demographic data for clusters and gaps and recommend open spaces for acquisition, creation, service level change and removal, considering equity and access needs.	Asset Services	IMT Group, Strategic Planning	<div></div>	<div></div>				
1.2.4	Prepare site specific Master Plans for targeted high use open spaces to optimise use, manage potential conflicts and protect the amenity, cultural and environmental values of the open space and its surrounds.	Asset Services	Business, Sport and Community Services, Property Services,						<div></div>
1.2.5	Update Plans of Management for all open spaces to ensure they are managed to community expectations, including complimentary commercial uses.	Asset Services	Business, Sport and Community Services, Property Services,	<div></div>	<div></div>				
1.2.6	Identify replacement options for recreation facilities in the M6 corridor and advocate for these replacement facilities to be provided when the M6 motorway proceeds.	Asset Services	Business, Sport and Community Services, Property Services,, Strategic Planning		<div></div>	<div></div>			



## Area of Focus

# 2

## Open space for everyone

We will recognise and respond to our community's changing recreation needs and priorities. We want everyone to be able to enjoy our open spaces regardless of their age, ability, cultural background or interest. We want more opportunities for people to participate in recreation that will lead to improved health & well being.

To do this we will:

- Improve accessibility and connectivity
- Enhance the quality of open space
- Support open space diversity
- Connect people to nature



# IMPLEMENTATION PLAN

Implementation Actions		Delivery Stream	Collaboration	Year					On Going
				22/ 23	23/ 24	24/ 25	25/ 26	5+ Yrs	
Improve accessibility and connectivity									
2.1.1	Develop an open space inclusion program that prioritises equitable access to facilities across the Shire.	Asset Services	Business, Sport and Community Services	●	●				
2.1.2	Prioritise accessibility and inclusion when preparing Masterplans and designs for open space, noting that some environments may limit the ability to accommodate full accessibility.	Asset Services	Business, Sport and Community Services						●
2.1.3	Strengthen open space connectivity through integrated planning that links recreational, heritage and natural values.	Asset Services	Strategic Planning, Traffic and Public Domain Services						●
2.1.4	Consider Green Grid Implementation when preparing open space masterplans, designs and grant funding applications.	Asset Services	Strategic Planning, Traffic and Public Domain Services						●
2.1.5	Ensure Green Grid connections in Council’s Active Transport Strategy are coordinated with other open space improvements.	Traffic & Public Domain Services	Asset Services, Strategic Planning						●
Enhance the quality of open space									
2.2.1	Apply the Open Space Service Standards when renewing, upgrading or creating open spaces.	Asset Services							●
2.2.2	Review the Open Space Service Standards within five years to ensure current and emerging community needs are being met.	Asset Services						●	
2.2.3	Review and update all open space Plans of Management to a consistent and best practice standard and address potential conflicts between access, amenity, cultural and environmental values of the open space.	Asset Services	Property Services	●	●				
2.2.4	Review Plans of Management within five years to ensure competing user demands are managed and amenity and environmental qualities are maintained.	Asset Services	Property Services					●	
2.2.5	Ensure open space Masterplans and designs consider the needs of all users, respond to place and take into account local character and context.	Asset Services							●
2.2.6	Prepare design guidelines for open space and recreation facilities to support this Strategy’s service delivery models and incorporate these into Council’s Public Domain Design Manual.	Asset Services			●	●	●		



# IMPLEMENTATION PLAN

Implementation Actions		Delivery Stream	Collaboration	Year					On Going
				22/ 23	23/ 24	24/ 25	25/ 26	5+ Yrs	
Support open space diversity									
2.3.1	In the preparation of open space Masterplans and designs, consider emerging and likely future needs of the community for recreation, and ensure a diverse range of experiences and recreational opportunities are provided.	Asset Services	Business, Sport and Community Services						<div></div>
2.3.2	Assess the unique attributes and recreational uses of all open spaces and assemble this information for the community to access online.	Asset Services	Business, Sport and Community Services, Property Services		<div></div>				
2.3.3	Develop and commence the implementation of an interpretation plan that communicates diverse and unique attributes of our open spaces including historical, environmental and cultural heritage.	Asset Services				<div></div>			





# IMPLEMENTATION PLAN

Implementation Actions		Delivery Stream	Collaboration	Year					On Going
				22/ 23	23/ 24	24/ 25	25/ 26	5+ Yrs	
Connect people to nature									
2.4.1	Complete an inventory of all bush-walking tracks and nature based recreation facilities and ensure this is readily accessible to the public.	Asset Services	Parks Operations		<div></div>				
2.4.2	Facilitate a forum for engagement with agencies and interest groups to investigate recreation opportunities in bushland that has minimal impact on its ecological values.	Asset Services	Communication and Engagement			<div></div>	<div></div>		
2.4.3	Prepare and implement a plan for the improved provision of passive recreation facilities within bushland. The plan will be prioritised and aligned with the Green Grid.	Asset Services	Strategic Planning			<div></div>	<div></div>		
2.4.4	Monitor unauthorised adhoc play structures such as bike jumps and bike tracks in open spaces. Ensure they operate to Open Space Service Standards and are removed when no longer used.	Asset Services	Communication and Engagement						<div></div>



## Area of Focus

# 3

## Best value for the community

Our open space investment and management will derive the best value for our community over the long term. We want to optimise the use of our open spaces to provide more and better opportunities for the community to be active and connect to nature.

To do this we will:

- Create community benefits
- Promote integration and multi-functionality
- Manage and maintain open space



# IMPLEMENTATION PLAN

Implementation Actions		Delivery Stream	Collaboration	Year					On Going
				22/ 23	23/ 24	24/ 25	25/ 26	5+ Yrs	
Create community benefits									
3.1.1	Develop and implement a consistent Public Interest Test for commercial activities, private functions and events in open space.	Asset Services	Building Operations, Parks Operations, Waste Services, Project Services	●					
3.1.2	Revise Plans of Management for commercial activities private functions and events in open space when a Public Interest Test is satisfied.	Asset Services	Financial Services						●
3.1.3	Consider opportunities for commercial activities in open space Masterplans when a Public Interest Test is satisfied.	Asset Services	Building Operations, Parks Operations, Waste Services, Project Services						●
3.1.4	Develop a comprehensive communications framework to better inform the community of the wide range of open space and recreation opportunities that are available across Sutherland Shire.	Asset Services	Financial Services		●				
Promote integration and multi-functionality									
3.2.1	Initiate a masterplan for all Regional or District parks when there is a change of use proposed for the open space, ensuring integration or multi-functionality requirements are incorporated and the best long term benefits of the space are realised.	Asset Services	Building Operations, Parks Operations, Waste Services, Project Services						●
3.2.2	Identify, review and prioritise underutilised assets, and then work with user groups to achieve the shared use of facilities and fields, where the asset can accommodate shared use.	Asset Services	Financial Services	●	●	●			
3.2.3	Analyse the current provision of public toilets in District and Regional parks and consider options to meet identified service needs including conversion of existing sports club toilets to achieve improved public access.	Asset Services	Building Operations, Parks Operations, Waste Services, Project Services	●	●	●			
Manage and maintain open space									
3.3.1	Apply contemporary Plans of Management to all Council managed open space.	Asset Services	Financial Services						●
3.3.2	Use Asset Management Plans to refine priorities for investment to ensure that whole of life costs are properly considered.	Asset Services	Building Operations, Parks Operations, Waste Services, Project Services						●
3.3.3	Continue to review and apply Council's maintenance service levels for open space to align with the Open Space Service Standards.	Asset Services	Financial Services						●



## Area of Focus

# 4

## Protecting environment and heritage

Our open spaces are intertwined with the natural environment and our built and Aboriginal cultural heritage. We want to protect and enhance our natural areas and heritage values. We want to engage with the idea that if we care for Country it will care for us.

To do this we will:

- Protect and enhance environmental values
- Protect and conserve heritage values



# IMPLEMENTATION PLAN

Implementation Actions		Delivery Stream	Collaboration	Year					On Going
				22/ 23	23/ 24	24/ 25	25/ 26	5+ Yrs	
Create community benefits									
4.1.1	Map all bushland and natural areas to the Open Space Service Standards.	Asset Services,	Environmental Services, IMT Services	●					
4.1.2	Update all online information and Reserve signage to reflect bushland types and permitted uses.	Asset Services			●	●	●	●	
4.1.3	Control commercial use in natural areas to ensure it is compatible with the environmental & passive qualities of the space and will not have an adverse effect on those values.	Asset Services							●
4.1.4	Undertake bushcare activities and other management programs such as Bushcare, feral animal control, pest species management and dune care to restore disturbed ecosystems.	Asset Services	Parks Operations						●
4.1.5	Implement appropriate fire hazard reduction programs to maintain the ecological integrity of natural areas and reduce bush fire hazard risk.	Asset Services	Parks Operations						●
Protect and conserve heritage values									
4.2.1	Review currency of open space Plans of Management, considering Country and Aboriginal cultural heritage values.	Asset Services	Arts and Culture, Business, Sport and Community Services, Property Services		●	●			
4.2.2	Embed consideration of Country and Aboriginal cultural heritage when preparing open space Masterplans.	Asset Services	Arts and Culture, Business, Sport and Community Services						●
4.2.3	Implement the actions of Council's Aboriginal Cultural Heritage Management Plan.	Asset Services	Arts and Culture						●
4.2.4	Implement the Aboriginal Reconciliation action plan for open space planning, development and management.	Asset Services	Arts and Culture						●
4.2.5	Complete Conservation management plans for all heritage listed items in open space areas.	Asset Services	Strategic Planning			●	●	●	
4.2.6	Implement a communications program to improve awareness of the legislative framework concerning the protection of heritage items.	Asset Services	Communication and Engagement			●	●		

# APPENDIX

## SERVICE STANDARDS

### SERVICE STANDARDS

A service standard is a set of performance criteria to guide the planning, assessment and provision of open space or recreation services. This appendix contains service standards for the following open space and recreation services:

- parks
- bushland
- active recreation
- dog exercise
- walking tracks
- bicycle facilities
- public toilets
- watercraft launching facilities
- wharfs
- tidal pools

The service standards incorporate three main considerations for service delivery:

### DISTRIBUTION

We want to make it easier and fairer for more people to access open spaces and recreation facilities across Sutherland Shire. To do this most of our service standards are structured using a hierarchy, often based on distance from homes. This results in a more equitable distribution of services.

Smaller scale or lower order services are provided at the Local level, which is set at walkable distances from homes. Larger scale or higher quality services are provided at the larger District or Regional levels. These catchments are set at longer distances from homes and assume travel by car or public transport.

### CONNECTIVITY AND ACCESSIBILITY

We want to deliver open space services that are more accessible and inclusive. So in addition to addressing distribution, our service standards consider the actual physical connections and conditions that enable access for everyone, including people with different abilities and from diverse cultures and language groups.

### QUALITY

We want to deliver high quality open space services that best meet the needs of our community. The service standards address quality by defining the type of open space or recreation facility in terms of its intended purpose, user focus, scale and level of service provision, and by setting further requirements, where relevant, for the following criteria:

- land size and shape
- type of recreation facilities to be provided (or key features, considerations and possible examples)
- support features to be provided
- co-location of other services



# PARK SERVICE STANDARDS

Park Type	Regional Park	District Park	Local Park	Green Space
<b>Description</b>	Destination or long-stay parks serving the Sutherland Shire region with diverse, premium-quality opportunities for play and recreation that is accessible for all.	Destination or long-stay parks serving a suburban district with a range of high-quality opportunities for play and recreation that is accessible for all.	Everyday use, short-stay parks serving a walkable catchment and offering basic-quality opportunities for recreation. Accessibility is prioritised.	Existing 'pocket' parks, linear parks and residual open spaces with a focus on landscape amenity.
<b>Distribution</b>	Within 5 km from most homes	Within 2 km from most homes	Within 800m from most homes. Ideally within 400 m in high density areas	No requirement
<b>Connectivity</b>	Within 20 minutes drive from most homes.	Within 15 minutes drive or 25 minutes walk from most homes.	Within 10 minutes walk from most homes. Ideally within 5 minutes walk in high density areas.	No requirement
<b>Active transport</b>	Connected to active transport network	Connected to active transport network	Connected to active transport network	No requirement
<b>Public transport</b>	Within 500 m of public transport stop	Within 500 m of public transport stop	No requirement	No requirement
<b>Parking</b>	Available	Available	No requirement	No requirement
<b>Accessibility</b>	High inclusivity, access and mobility	Good inclusivity, access and mobility	Basic inclusivity	Accessible where possible
<b>Land size</b>	At least 5 ha	At least 2 ha	Ideally 0.5 ha  At least 0.15 ha if other quality open space is available locally Typically less than 0.3 ha or linear spaces	Typically less than 0.3 ha or linear spaces
<b>Land shape</b>	Shape flexible  Min 40 m boundary  Ideally 50% frontage to road	Shape flexible  Min 40 m boundary  Ideally 50% frontage to road	Shape flexible  Ideally 40m boundary and 50% frontage to road	No requirement

# PARK SERVICE STANDARDS *(contd)*

Park Type	Regional Park	District Park	Local Park	Green Space
<b>Recreation facilities<sup>11</sup></b>				
Childrens play space	✓	✓	○	
Youth recreation space	✓	✓		
Active recreation space	✓	✓	✓	
Fitness & exercise space	✓	○	○	
Pathways/ walking circuit	✓	○	○	
Dog exercise area	○	○	○	
<b>Support features</b>				
Signage	✓	✓	✓	○
Seating	✓	✓	✓	○
Bubbler	✓	✓	✓	
Bins	✓	✓	✓	
Public toilets <sup>12</sup>	✓	✓		
Bike racks	✓	✓		
Shelters	✓	○		
Picnic settings	✓	○		
Barbeques	✓	○		
Lighting	✓	○		
Artwork	○	○		
<b>Co-located facilities</b>				
Sportsground/playing fields	○	○	○	
Café/kiosk/food truck	○	○		
Community buildings	○	○		

Key ✓ always provided  
○ sometimes provided

<sup>11</sup> See separate Service Standards for each type of recreation facility. See Play Strategy for Children's play space, Youth recreation space and Fitness and exercise space.

<sup>12</sup> See separate Service Standards for Public toilets within parks.



# BUSHLAND SERVICE STANDARDS

Bushland Type	Conservation	Recreation (Walking track and path based)	Recreation (Low-impact)
<b>Description &amp; objectives</b>	<p>Bushland or natural areas with high ecological, scientific, cultural or aesthetic value, where the objectives are:</p> <ul style="list-style-type: none"> <li>to protect, manage or restore those areas</li> <li>to prevent activities that could destroy, damage or otherwise have an adverse effect on those values</li> <li>to provide for limited walking track and path-based recreation that will not have an adverse effect on those values</li> </ul>	<p>Bushland or natural areas with special ecological, scientific, cultural or aesthetic value, where the objectives are:</p> <ul style="list-style-type: none"> <li>to protect, manage or restore those areas to provide for walking track and path-based recreation that will not have an adverse effect on those values</li> </ul>	<p>Bushland or natural areas with special ecological, scientific, cultural or aesthetic value, where the objectives are:</p> <ul style="list-style-type: none"> <li>to protect, manage or restore those areas</li> <li>to provide for a limited range of low-impact recreation activities that will not have an adverse effect on those values.</li> </ul>
<b>Connectivity &amp; accessibility</b>	<ul style="list-style-type: none"> <li>walking track access points to be visible and safe</li> </ul>	<ul style="list-style-type: none"> <li>connected to active transport network</li> <li>walking track access points to be visible and safe</li> </ul>	<ul style="list-style-type: none"> <li>connected to active transport network</li> <li>recreation activity access points to be visible and safe</li> </ul>
<b>Recreation facilities</b>	<p>Possible examples (subject to environmental assessment):</p> <ul style="list-style-type: none"> <li>view points or lookouts</li> <li>walking tracks or loops as part of a larger network</li> </ul>	<p>Possible examples (subject to environmental assessment):</p> <ul style="list-style-type: none"> <li>view points or lookouts</li> <li>walking tracks or loops as part of a larger network</li> <li>local nature play spaces (see Play Strategy)</li> <li>local informal bike jumps/tracks</li> </ul>	<p>Possible examples (subject to environmental assessment):</p> <ul style="list-style-type: none"> <li>view points or lookouts</li> <li>walking tracks or loops as part of a larger network</li> <li>mountain bike trails</li> <li>adventure recreation facilities</li> <li>small watercraft launching facilities</li> </ul>
<b>Shade</b>	50% tree shade to access points and along tracks	50% tree shade to access points and along tracks	50% tree shade to access points and along tracks
<b>Support facilities</b>	<p>At major access points:</p> <ul style="list-style-type: none"> <li>wayfinding signs</li> <li>drinking water</li> <li>seats</li> <li>waste bins</li> </ul>	<p>At major access points and servicing walking tracks:</p> <ul style="list-style-type: none"> <li>wayfinding signs</li> <li>drinking water</li> <li>seats</li> <li>waste bins</li> </ul>	<p>At major access points and activity sites:</p> <ul style="list-style-type: none"> <li>wayfinding signs</li> <li>drinking water</li> <li>seats</li> <li>waste bins</li> <li>public toilets (desirable)</li> </ul>
<b>Co-located facilities</b>	Co-located facilities should be beyond bushland	<p>At major access and vantage points:</p> <ul style="list-style-type: none"> <li>possible play and picnic opportunities</li> <li>Parking</li> <li>Viewing platforms</li> </ul>	<p>At major access points and recreation sites:</p> <ul style="list-style-type: none"> <li>possible play and picnic opportunities</li> <li>Parking</li> <li>Viewing platforms</li> </ul>

# ACTIVE RECREATION SERVICE STANDARDS

Active Recreation Type	Regional	District	Local
<b>Description</b>	Destination open space area that provides a range of activities for individuals, groups and larger community gatherings. Should support extended stays for picnics, play, and other activities.	District level open space area that provides a range of recreation opportunities for individuals and groups. Should support extended stays for picnics, play, and other activities	Locally accessible outdoor recreation area for enjoyment of the outdoors and connection with nature.
<b>Possible locations</b>	<ul style="list-style-type: none"> <li>Regional parks</li> <li>Regional bushland</li> </ul>	<ul style="list-style-type: none"> <li>District parks</li> <li>District bushland</li> <li>Sports grounds/fields</li> </ul>	<ul style="list-style-type: none"> <li>Local parks &amp; some local green space</li> <li>Local bushland</li> </ul>
<b>Connectivity &amp; accessibility</b>	<ul style="list-style-type: none"> <li>online information</li> <li>signage</li> <li>connected to active transport network</li> <li>500m to public transport</li> <li>parking available</li> <li>highly accessible</li> </ul>	<ul style="list-style-type: none"> <li>online information</li> <li>signage</li> <li>connected to active transport network</li> <li>500m to public transport</li> <li>parking available</li> <li>accessible location</li> </ul>	<ul style="list-style-type: none"> <li>online information</li> <li>signage</li> <li>connected to active transport network</li> <li>pram friendly location</li> </ul>
<b>Recreation facilities</b>	Possible examples: <ul style="list-style-type: none"> <li>parkland suited to community gatherings</li> <li>foreshore or linear parkland with pathway and links to play, picnic and activity points</li> <li>viewpoint or lookout with facilities for groups or area for picnics and play</li> </ul>	Possible examples: <ul style="list-style-type: none"> <li>landscape parkland suited to social gathering in both large and small groups</li> <li>Informal sports field/ kick-a-ball space (60 m x 40 m)</li> <li>exercise site and fitness stations on a circuit or linear path</li> <li>multi-sport courts</li> <li>community tennis courts, bocce courts</li> </ul>	Possible examples: <ul style="list-style-type: none"> <li>landscaped parkland suitable for active and passive recreation</li> <li>small kick-a-ball/active recreation space within a local park</li> <li>landscaped gardens and public space areas within larger public or sports precincts</li> <li>viewpoints or lookouts</li> </ul>
<b>Minimum area</b>	500m <sup>2</sup> picnic area plus 2,500m <sup>2</sup> large gathering space		1,500m <sup>2</sup> - 3,000m <sup>2</sup> in high density areas  3,000m <sup>2</sup> 5,000m <sup>2</sup> in other areas
<b>Support facilities</b>	<ul style="list-style-type: none"> <li>toilets</li> <li>water station</li> <li>seats</li> <li>picnic facilities</li> <li>waste bins</li> </ul>	<ul style="list-style-type: none"> <li>toilets</li> <li>water bubbler</li> <li>seats</li> <li>picnic facilities</li> <li>waste bins</li> </ul>	<ul style="list-style-type: none"> <li>toilets</li> <li>water bubbler</li> <li>seats</li> <li>waste bins</li> </ul>
<b>Co-located facilities</b>	<ul style="list-style-type: none"> <li>youth recreation</li> <li>café, kiosk or food truck</li> <li>sport or community facilities</li> </ul>	<ul style="list-style-type: none"> <li>youth recreation</li> <li>café, kiosk or food truck</li> <li>sport or community facilities</li> </ul>	<ul style="list-style-type: none"> <li>no requirement</li> </ul>



# DOG EXERCISE SERVICE STANDARDS

Dog Exercise Type	Off-Leash Park
<b>Description</b>	Destination park spaces for recreation with dogs where fencing or natural barriers are in place to support off-leash activity and minimise disturbance of other park uses and activities.
<b>Distribution</b>	Most homes within 5 km
<b>Possible locations</b>	Subject to site suitability assessment: <ul style="list-style-type: none"> <li>Regional and District level parks</li> </ul>
<b>Connectivity &amp; accessibility</b>	<ul style="list-style-type: none"> <li>connected to active transport network</li> <li>accessible location and site</li> <li>meets access standards</li> </ul>
<b>Facilities</b>	<ul style="list-style-type: none"> <li>Highly visible location</li> <li>Fencing, natural or existing barriers</li> <li>Timed or dedicated use of open space</li> <li>Possible separate areas for small and large dogs</li> </ul>
<b>Shade</b>	Perimeter shade to 50% of boundary where feasible
<b>Minimum area</b>	3,000 m <sup>2</sup>
<b>Support facilities</b>	<ul style="list-style-type: none"> <li>Water station</li> <li>Seating</li> </ul>



# WALKING TRACK SERVICE STANDARDS

Walking Track Type	All Walking Tracks
<b>Description</b>	Walking, cycling and running trails within open space areas that are locally accessible and car-free - allowing for extended activity times and linking to longer networks, natural areas and community destinations
<b>Distribution</b>	Aligned to Green Grid as well as tracks formed to reach vantage points
<b>Possible locations</b>	<ul style="list-style-type: none"> <li>Regional and District level parks and bushland</li> <li>Local level parks, linear green space and bushland</li> <li>Foreshore areas and beaches</li> </ul>
<b>Connectivity &amp; accessibility</b>	<ul style="list-style-type: none"> <li>connected to active transport network</li> <li>safe access points</li> </ul>
<b>Facilities</b>	<p>Diverse settings and opportunities to enjoy the outdoors and connect with nature. Possible examples:</p> <ul style="list-style-type: none"> <li>promenade style pathways along the waterfront</li> <li>a car-free running or shared pathway loop (more than 2 km) utilising local level parks and linear green space</li> <li>walking tracks or loops within suitable bushland areas</li> </ul>
<b>Shade</b>	Tree shade for at least 50% of walking path/track distance
<b>Minimum area</b>	Open space corridors should be 10m wide or greater
<b>Support facilities</b>	<p>At major access points:</p> <ul style="list-style-type: none"> <li>wayfinding signs</li> <li>drinking water</li> <li>seats</li> <li>waste bins</li> </ul>



# BICYCLE FACILITY SERVICE STANDARDS

Bicycle Facility Type	Regional	Local
<b>Description</b>	Destination facilities for individual, car-free bicycle recreation, including criterium tracks, pump tracks and mountain bike trail parks.	Local, unauthorised 'bike jumps' and 'bike tracks' built by members of the community in a park.
<b>Possible locations</b>	Existing facilities to be maintained: <ul style="list-style-type: none"> <li>• Waratah Park criterium circuit</li> <li>• Waratah Park mountain bike trail</li> <li>• Lucas Heights Conservation Area (Mill Creek mountain bike trails)</li> <li>• Barden Ridge bike pump track</li> </ul>	Possible locations are identified by local communities. Key site criteria: <ul style="list-style-type: none"> <li>• Bushland (Recreation Type)</li> <li>• In parks alongside bushland adequately buffered from adjacent land uses and homes</li> <li>• not critical habitat</li> <li>• open space not constrained e.g. land contamination, flooding or high-voltage power lines</li> <li>• good passive surveillance</li> <li>• proximity of other sites</li> <li>• competing uses of the land</li> </ul>
<b>Connectivity &amp; accessibility</b>	<ul style="list-style-type: none"> <li>• connected to active transport network</li> <li>• meets access standards</li> <li>• parking available</li> </ul>	<ul style="list-style-type: none"> <li>• connected to active transport network</li> </ul>
<b>Recreation facilities</b>	<ul style="list-style-type: none"> <li>• See Possible locations above</li> </ul>	Rough-formed bike tracks/jumps in a bushland setting: <ul style="list-style-type: none"> <li>• temporary installations</li> <li>• must allow for future restoration</li> </ul>
<b>Minimum area</b>	No requirement	Nominal maximum area 400 m <sup>2</sup>
<b>Support facilities</b>	<ul style="list-style-type: none"> <li>• signage</li> <li>• shelter or shade area</li> <li>• drinking water</li> <li>• bike stands</li> <li>• toilets (desirable)</li> </ul>	<ul style="list-style-type: none"> <li>• signage</li> </ul>





# TOILET SERVICE STANDARDS

Toilet Type	Regional	Local	Sportsclub
<b>Description</b>	Public toilets - that are accessible, clean, safe and inviting - provided to support and enhance the use of Regional level parks and recreational facilities.	Public toilets - that are accessible, clean, safe and inviting - provided to support and enhance the use of District level parks and recreational facilities.	Public toilets - that are accessible, clean safe and inviting - provided within existing sports clubhouse facilities.
<b>Distribution</b>	Regional level parks	District level parks	All organised sport fields with existing clubhouse facilities
<b>Connectivity &amp; Accessibility</b>	<ul style="list-style-type: none"> <li>signage</li> <li>connected to active transport network</li> <li>500m to public transport</li> <li>accessible parking available</li> <li>meets access standards</li> </ul>	<ul style="list-style-type: none"> <li>signage</li> <li>connected to active transport network</li> <li>500m to public transport</li> <li>parking available</li> <li>meets access standards</li> </ul>	<ul style="list-style-type: none"> <li>signage</li> <li>connected to active transport network</li> <li>accessible parking available</li> <li>meets access standards</li> </ul>
<b>Opening hours</b>	<ul style="list-style-type: none"> <li>open during daytime or as per Plan of Management</li> </ul>	<ul style="list-style-type: none"> <li>open during daytime or as per Plan of Management</li> </ul>	<ul style="list-style-type: none"> <li>open to public during operation of field by sport club</li> </ul>
<b>Facilities</b>	<p>High quality inclusive design in accordance with Council's Public Domain Design Manual</p> <p><u>Toilets</u></p> <ul style="list-style-type: none"> <li>1 female ambulant cubicle</li> <li>1 male ambulant cubicle</li> <li>1 unisex ambulant cubicle</li> <li>Additional cubicles or urinals as necessary</li> <li>Porcelain pans and wall mounted urinals</li> <li>1 accessible/family change room with baby change table</li> </ul> <p><u>Handwashing</u></p> <ul style="list-style-type: none"> <li>Hand basins with soap dispensers</li> <li>Hand dryer as necessary</li> </ul> <p><u>Change and shower</u></p> <ul style="list-style-type: none"> <li>1 adult accessible change room, MLAK entry (if regional inclusive playground or swim facility).</li> <li>Indoor shower (if at swim facility).</li> </ul>	<p>High quality inclusive design in accordance with Council's Public Domain Design Manual</p> <p><u>Toilets</u></p> <ul style="list-style-type: none"> <li>1 female ambulant cubicle</li> <li>1 male ambulant cubicle</li> <li>Additional cubicles or urinals as necessary</li> <li>Porcelain pans and wall mounted urinals</li> <li>1 accessible/family toilet with baby change</li> </ul> <p><u>Handwashing</u></p> <ul style="list-style-type: none"> <li>Hand basins with soap dispensers</li> </ul>	<p>Good quality inclusive design in accordance with Council's Public Domain Design Manual</p> <p><u>Toilets</u></p> <ul style="list-style-type: none"> <li>1 female ambulant cubicle</li> <li>1 male ambulant cubicle</li> <li>Additional cubicles or urinals as necessary</li> <li>Porcelain pans and wall mounted urinals</li> <li>1 accessible/family toilet with baby change</li> </ul> <p><u>Handwashing</u></p> <ul style="list-style-type: none"> <li>Hand basins with soap dispensers</li> </ul>

# WATERCRAFT LAUNCHING SERVICE STANDARDS

Watercraft Launching Type	Regional	Local
<b>Description</b>	Large capacity facilities serving a regional catchment that provide public access to the waterway for trailered boats and small watercraft	Limited capacity facilities serving a district or local catchment that provide public access to the waterway for trailered boats or small watercraft
<b>Location</b>	Existing boat ramp and small watercraft launching and retrieval sites: <ul style="list-style-type: none"> <li>Swallow Rock, Grays Point</li> <li>Bonna Point, Kurnell</li> <li>Tom Uglys Bridge, Sylvania</li> <li>Hawkesbury Park, Sylvania Waters</li> <li>Wonga Rd, Yowie Bay</li> <li>Burnum Burnum Sanctuary, Woronora</li> </ul>	Existing boat ramp and small watercraft launching and retrieval sites: <ul style="list-style-type: none"> <li>Bonnet Bay Reserve, Bonnet Bay</li> <li>Lugano Ave, Burraneer (rescue)</li> <li>Water St, Caringbah South</li> <li>Verona Range, Como</li> <li>Tonkin Reserve, Cronulla</li> <li>Wallys wharf, Dolans Bay</li> <li>Silver Beach Reserve, Kurnell (catamaran club)</li> <li>Old Ferry Rd, Illawong</li> <li>Connell Rd, Oyster Bay</li> <li>St George Cres, Sandy Point</li> <li>Holts Point Pl, Sylvania Waters</li> <li>Prince Edward Park, Woronora</li> <li>Woronora RFS, Woronora</li> </ul>
<b>Connectivity &amp; accessibility</b>	<ul style="list-style-type: none"> <li>connected to active transport network</li> <li>car/trailer parking</li> <li>high level of accessibility</li> </ul>	<ul style="list-style-type: none"> <li>connected to active transport network</li> <li>car/trailer parking</li> <li>accessible where possible</li> </ul>
<b>Facilities or features</b>	Regional facility incorporates: <ul style="list-style-type: none"> <li>dual or multiple lane boat ramp</li> <li>adequate car/trailer parking and manoeuvring areas</li> <li>wheelchair accessible small watercraft holding/launching facility e.g. wharf/jetty with ramp and pontoon (consider edge protection and possible removable davits for lifting)</li> </ul>	District facility: <ul style="list-style-type: none"> <li>single or dual lane boat ramp with limited car/trailer parking and manoeuvring areas; or</li> <li>small watercraft launching/retrieval facility: wharf/jetty with ramp and pontoon and limited parking</li> </ul>
<b>Support facilities</b>	<ul style="list-style-type: none"> <li>user guidance signage</li> <li>lighting</li> <li>toilets</li> <li>drinking water</li> <li>bins</li> <li>outdoor shower (desirable)</li> <li>fish cleaning table (desirable)</li> <li>rigging and derigging bays (desirable)</li> </ul>	<ul style="list-style-type: none"> <li>District facility:</li> <li>single or dual lane boat ramp with limited car/trailer parking and manoeuvring areas; or</li> <li>small watercraft launching/retrieval facility: wharf/jetty with ramp and pontoon and limited parking</li> </ul>
<b>Co-located facilities</b>	<ul style="list-style-type: none"> <li>Play or picnic facilities desirable</li> </ul>	No requirement

# WHARF SERVICE STANDARDS

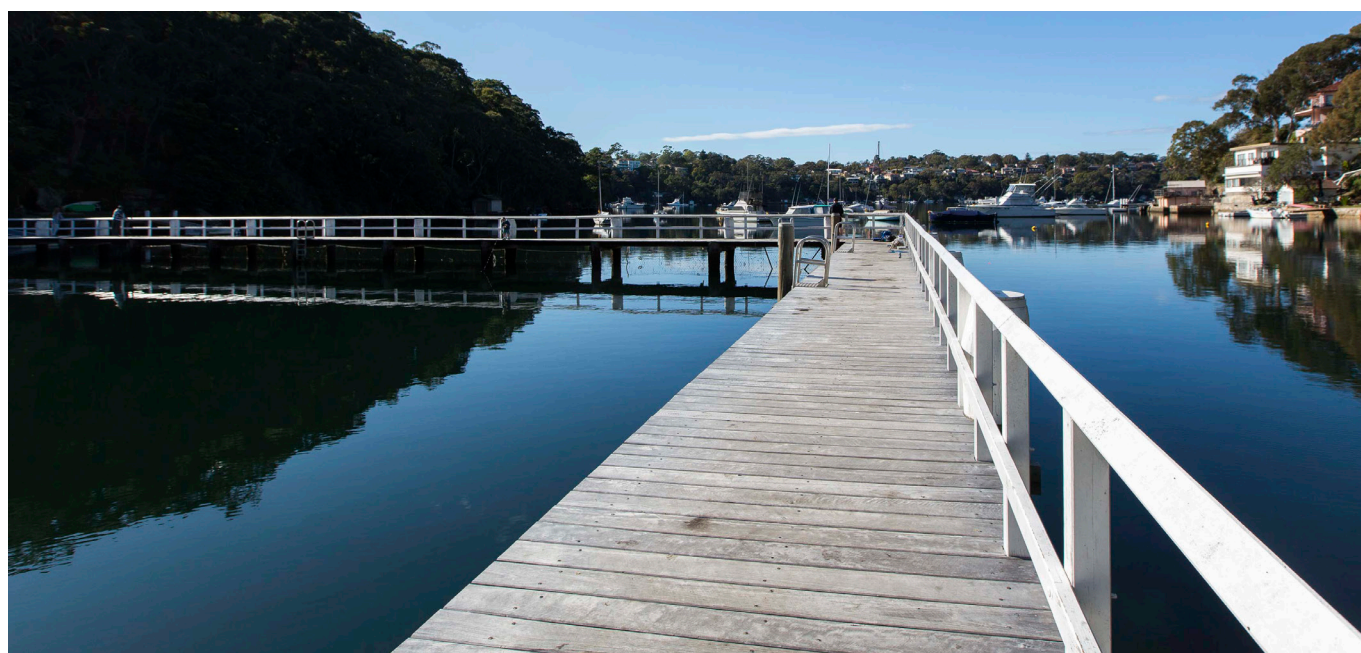
Wharf Type	Transport	Recreation
<b>Description</b>	Wharfs/pontoons facilitating public ferry services, or for private water transport in areas generally only accessible from the waterway.	Wharfs facilitating public access to the waterway primarily for recreational boating.
<b>Location</b>	Existing public wharf and pontoon sites: <ul style="list-style-type: none"> <li>Cronulla ferry wharf, Cronulla</li> <li>Bundeena ferry wharf, Bundeena</li> <li>Woronora bus terminal wharf, Woronora</li> </ul>	Existing wharfs associated with boat ramps: <ul style="list-style-type: none"> <li>Tom Uglys Bridge, Sylvania</li> <li>Hawkesbury Park, Sylvania Waters</li> <li>Verona Range, Como</li> </ul> Other existing wharfs: <ul style="list-style-type: none"> <li>Hospital Bay wharf, Gunnamatta Rd, Burraneer</li> <li>Yowie Bay Old Baths Reserve, Yowie Bay</li> <li>Prince Edward Park wharf, Woronora</li> </ul>
<b>Connectivity &amp; accessibility</b>	<ul style="list-style-type: none"> <li>connected to active transport network</li> <li>parking available</li> <li>meets access standards</li> </ul>	<ul style="list-style-type: none"> <li>connected to active transport network</li> <li>parking available</li> <li>accessible where possible</li> </ul>
<b>Facilities or features</b>	Must be fit for purpose, safe and meet access standards.	Must be fit for purpose, safe and accessible where possible.
<b>Support facilities</b>	<ul style="list-style-type: none"> <li>lighting</li> <li>signage</li> <li>toilets</li> <li>drinking water</li> <li>seating</li> <li>bins</li> </ul>	<ul style="list-style-type: none"> <li>lighting</li> <li>signage</li> </ul>
<b>Co-located facilities</b>	No requirement	No requirement





# TIDAL POOLS SERVICE STANDARDS

Tidal Pools Type	All Tidal Pools
<b>Description</b>	Netted waterway enclosures and ocean rock pools for swimming that serve the whole of the Shire.
<b>Locations</b>	Existing tidal baths and pools: <ul style="list-style-type: none"> <li>• Como Pleasure Grounds baths, Como</li> <li>• Cronulla Beach rock pools, Cronulla</li> <li>• Gunnamatta Park baths, Cronulla</li> <li>• Gymea Bay baths, Gymea Bay</li> <li>• Lilli Pilli baths, Lilli Pilli</li> <li>• Oak Park rock pool, Cronulla</li> <li>• Shelly Park rock pool, Cronulla</li> <li>• Silver Beach baths, Kurnell</li> </ul>
<b>Connectivity &amp; accessibility</b>	<ul style="list-style-type: none"> <li>• connected to active transport network</li> <li>• high level of accessibility</li> </ul>
<b>Facilities or features</b>	Tidal swimming enclosures and rock pools should be: <ul style="list-style-type: none"> <li>• safe and accessible</li> <li>• have suitable water quality</li> </ul>
<b>Support facilities</b>	<ul style="list-style-type: none"> <li>• signage</li> <li>• toilets and change space</li> <li>• outdoor shower</li> <li>• drinking water</li> <li>• bins</li> </ul>
<b>Co-located facilities</b>	<ul style="list-style-type: none"> <li>• possible play or picnic facilities</li> </ul>





4-20 Eton Street, Sutherland NSW 2232  
Locked Bag 17, Sutherland NSW 1499  
T 02 9710 0333  
ssc@ssc.nsw.gov.au  
**sutherlandshire.nsw.gov.au**

