



PROPOSED NEW TREE PLANTING TO CAPTAIN COOK DRIVE FRONTAGE TO CREATE SENSE OF ENTRY AND STRENGTHEN PARK IDENTITY

PROVIDE CONNECTIVE PATH NETWORK TO LINK PLAYGROUND WITH AMENITY BUILDINGS INCLUDING GARDEN BEDS AND SHADE TREES

PROPOSED ADDITIONAL CAREERS FACILITIES FOR PLAYGROUND USERS, e.g. SEATING

RESOLVE ENTRY AND PROVIDE DEDICATED ENTRY TO PLAYING FIELDS

PROPOSED PICNIC AREA WITH ADDITIONAL SHADE TREES

PROPOSED NEW FIRE STATION LOCATION WITHIN EXISTING PRECINCT

TORRES STREET

CAPTAIN COOK DRIVE

CAPTAIN COOK DRIVE

MARTON HALL

PLAYGROUND

KURNELL PRESCHOOL AND KINDERGARTEN

KURNELL J.R.L.F.C.

BASKETBALL COURT

PLAY AREA

POTENTIAL EARTH MOUNDS AND SHADE TREE (SEATING MOUNDS FOR SPECTATORS AND TO CREATE A SENSE OF ENCLOSURE AND INTEREST TO THE PARK)

PROPOSED EXERCISE EQUIPMENT CIRCUIT AROUND WHALE WALK

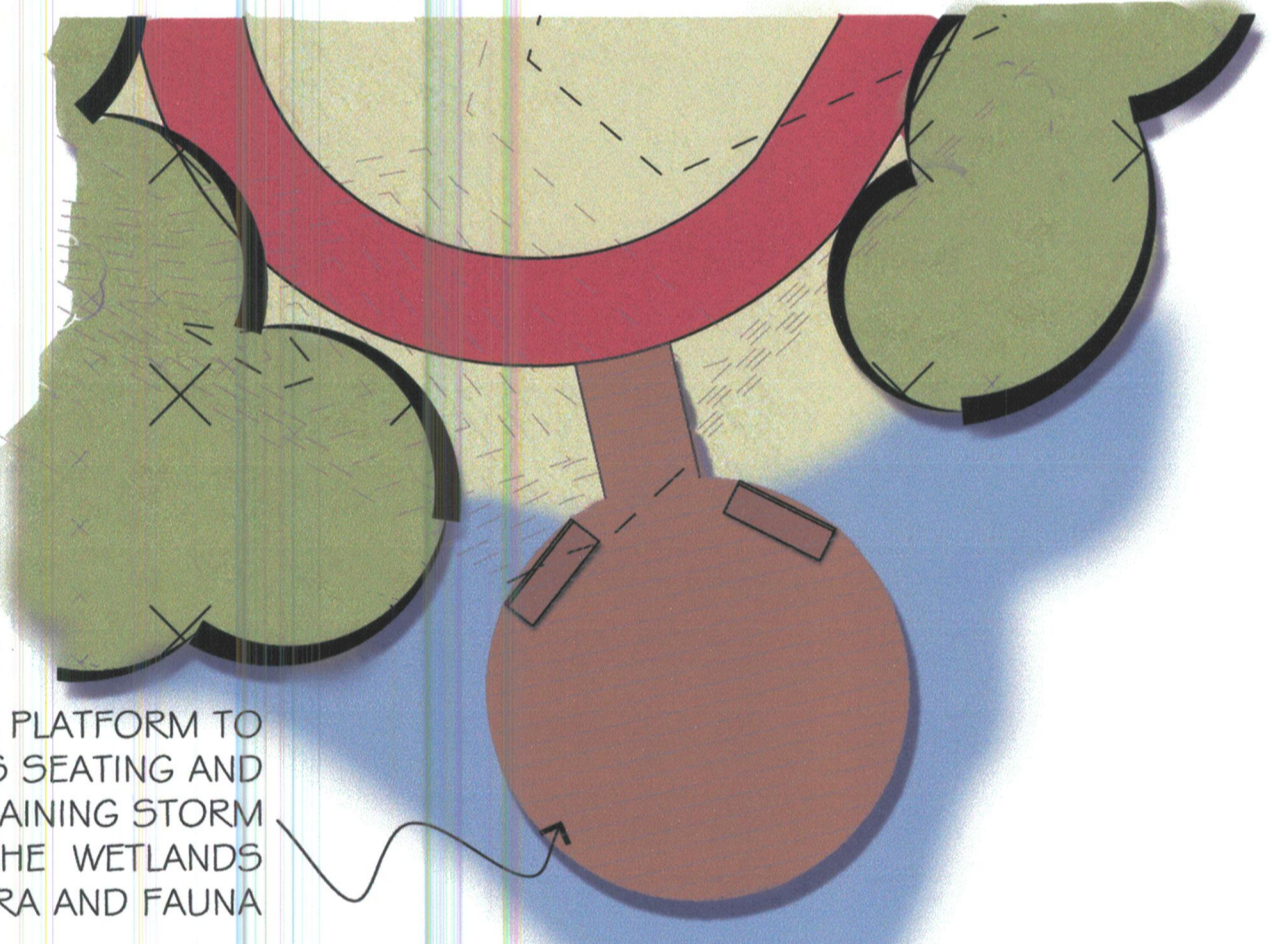
PROPOSED SUPPLEMENTARY BUSH REGENERATION TO EASTERN SIDE OF WHALE WALK PATH

PROPOSED CREEK REGENERATION OF DRAINAGE LINE TO CREATE A LINEAR WETLAND AND TO TREAT STORM WATER

PROPOSED BUSH REGENERATION TO SOUTH SIDE OF PATH

POTENTIAL EARTH MOUNDS AND TREE PLANTING, (SEATING MOUNDS FOR SPECTATORS AND TO CREATE A SENSE OF ENCLOSURE AND INTEREST TO THE PARK)

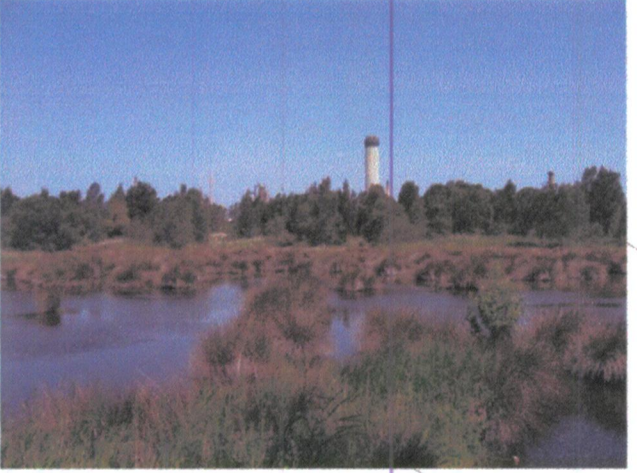
PROPOSED SUPPLEMENTARY BUSH REGENERATION TO SOUTHERN SIDE OF WHALE WALK PATH



PROPOSED VIEWING PLATFORM TO WETLAND. INCLUDES SEATING AND INTERPRETIVE MATERIAL EXPLAINING STORM WATER MANAGEMENT, THE WETLANDS IMPORTANCE & ITS FLORA AND FAUNA

INSERT - SCALE 1:200
STAGE ONE WORKS - TO INCLUDE VIEWING PLATFORM, SUPPLEMENTARY BUSH REGENERATION AND SHADE TREE PLANTING

VIEWING PLATFORM TO WETLAND. STAGE ONE WORKS - SEE INSERT



VIEW SOUTH OVER WETLAND



VIEW NORTH OVER PLAYING FIELD

SUTHERLAND SHIRE COUNCIL INVITES THE COMMUNITY TO PROVIDE COMMENTS WITH REGARDS TO THE MARTON PARK LANDSCAPE CONCEPT PLAN. IT IS INTENDED THAT THIS PLAN WILL FORM THE BASIS FOR FUTURE WORK IN THE RESERVE. COMMENTS SHOULD BE FORWARDED TO COUNCIL'S PARKS AND WATERWAYS BRANCH BY WEDNESDAY 12TH DECEMBER 2007 FOR FURTHER INFORMATION PLEASE CONTACT: SUTHERLAND SHIRE COUNCIL PARKS AND WATERWAYS BRANCH LOCKED BAG 17 SUTHERLAND NSW 1499 PH: 9710 0333 FAX: 9710 0397



DWG No. CP-01
REV No. -
REF No. PK0046

MARTON PARK, KURNELL LANDSCAPE CONCEPT PLAN

DATE: DECEMBER 2007
DRAWN BY: AU
SCALE: 1:500 @ A1



L:\Landscape\ACADDATA\Marton Park_PK0046\Landscape CONCEPT-issue\Xrefs\CP_base.dwg - CP-01 - 26/11/2007 - 12:26:25 PM