

AIMS

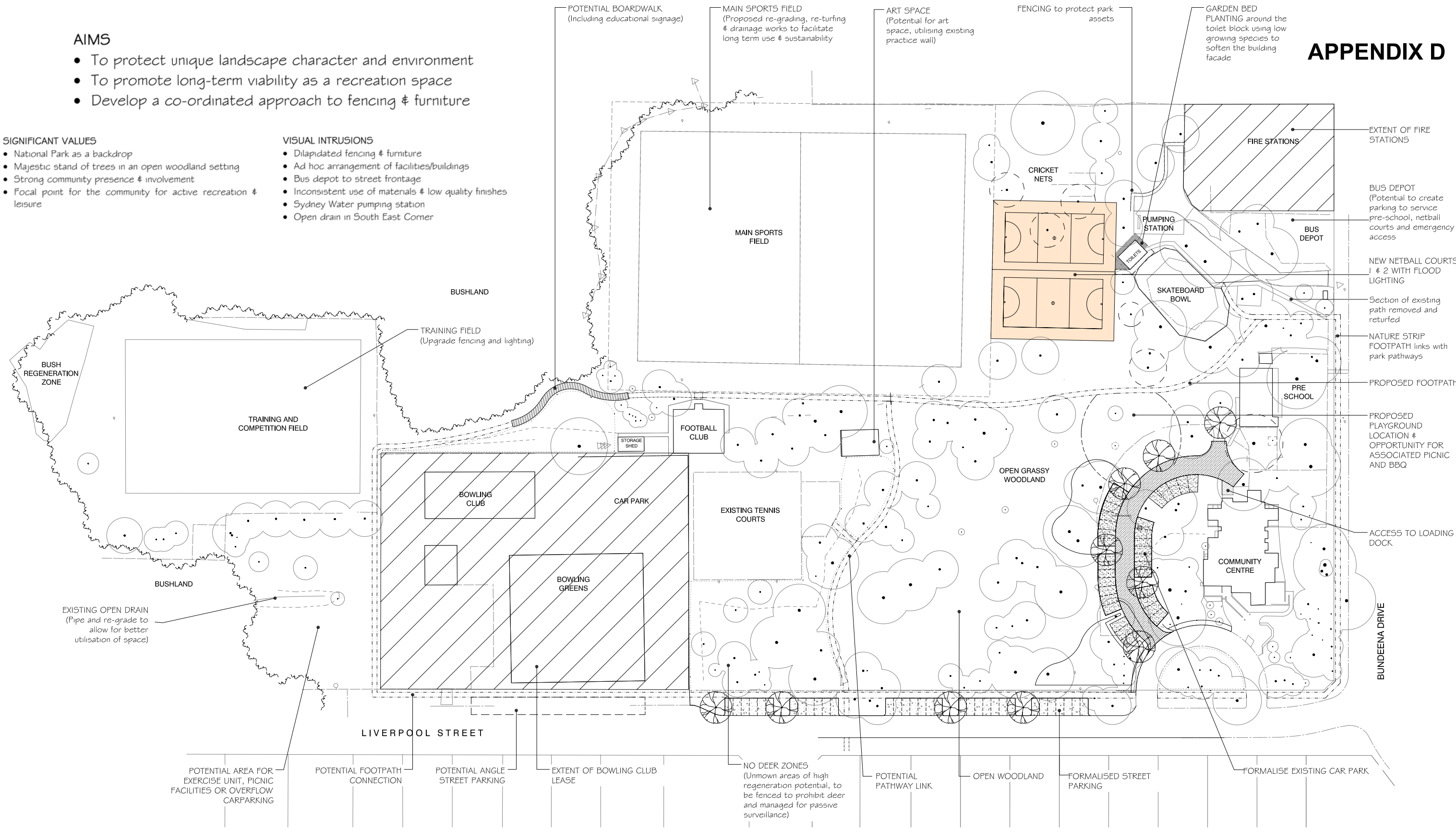
- To protect unique landscape character and environment
- To promote long-term viability as a recreation space
- Develop a co-ordinated approach to fencing & furniture

SIGNIFICANT VALUES

- National Park as a backdrop
- Majestic stand of trees in an open woodland setting
- Strong community presence & involvement
- Focal point for the community for active recreation & leisure

VISUAL INTRUSIONS

- Dilapidated fencing & furniture
- Ad hoc arrangement of facilities/buildings
- Bus depot to street frontage
- Inconsistent use of materials & low quality finishes
- Sydney Water pumping station
- Open drain in South East Corner



- LEGEND**
- PROPOSED NEW TREES
 - PROPOSED STREET PARKING - SURFACE TREATMENT
 - PROPOSED NO DEER ZONES
 - PROPOSED PLAYGROUND
 - PROPOSED PATH
 - PROPOSED BOARDWALK
 - EXISTING TREES
 - EDGE OF BUSHLAND
 - EXISTING FENCE LINE
 - EXISTING KERB LINE
 - PROPOSED NETBALL COURT SURFACE
 - PROPOSED TREE REMOVAL

FUTURE PLAYGROUND:
Fully integrated playground offering, high play value, comfortable carer's facilities & improved accessibility & safety.

NETBALL COURTS:
Located to minimise visual & physical impact on the park. Near existing infrastructure such as toilets complemented by skate bowl facilities & future playground.

CAR PARKING:
Formalisation of existing carpark aims to reduce hard surfaces in the park and provide opportunity to reclaim open space. Street parking along Liverpool Street for 32 vehicles, plus potential angle parking in front of the Bowling Club.

FENCING:
Opportunity to review & remove dilapidated fencing. Including low-key fencing to protect regeneration areas from deer & improve entrances to park.

FUTURE PATH NETWORK:
Path network to be constructed in stages to provide good access around the park, offering potential links to National Park trails and boardwalk in low-lying areas.

TREE MANAGEMENT:
New tree planting and regeneration areas to ensure future tree canopy thus maintaining habitat & character of the park.

GENERAL AMENITIES:
Long-term vision is to improve the quality of the park, with new paths, seats, picnic tables, BBQ's & fencing.

**BUNDEENA OVAL
DRAFT LANDSCAPE MASTER PLAN
(PROPOSED MAY 2007)**