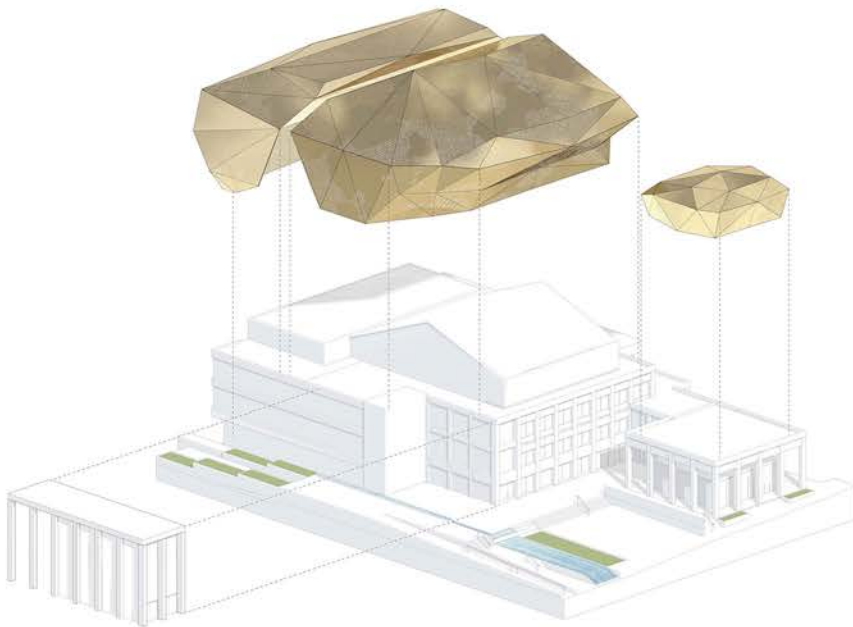
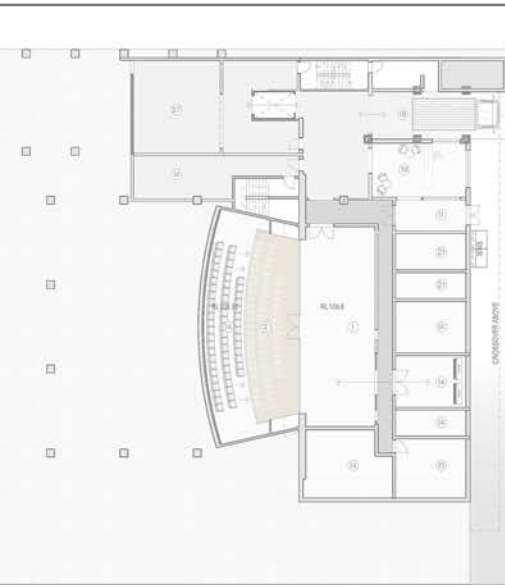


northern elevation

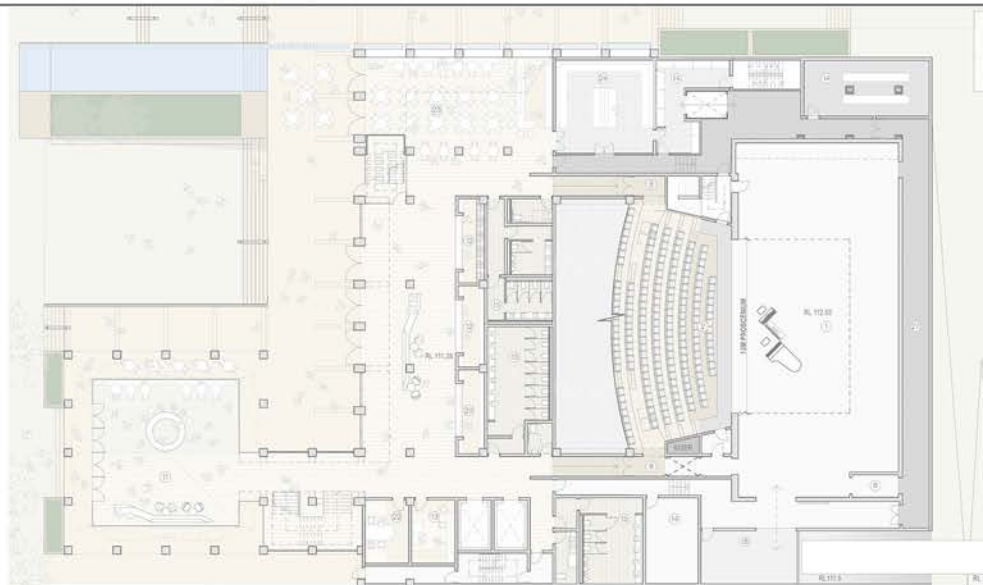




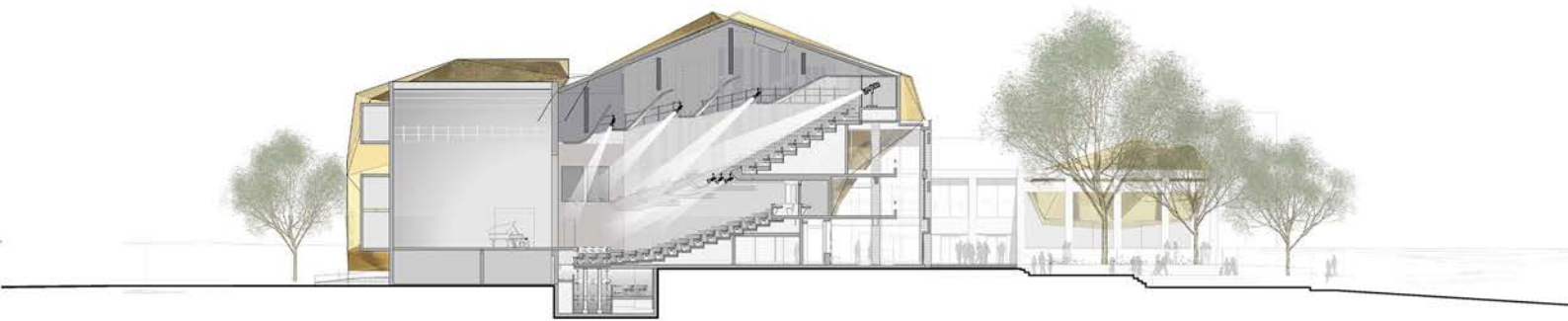
western elevation



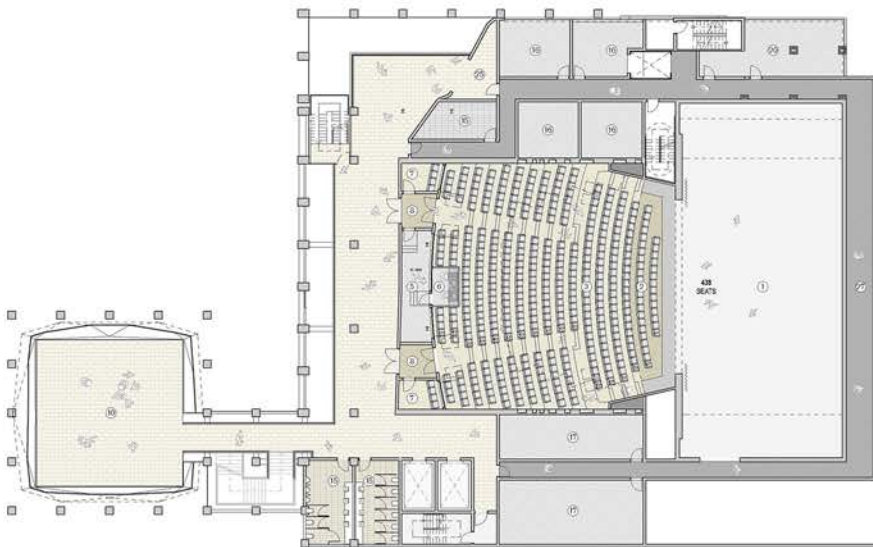
basement plan



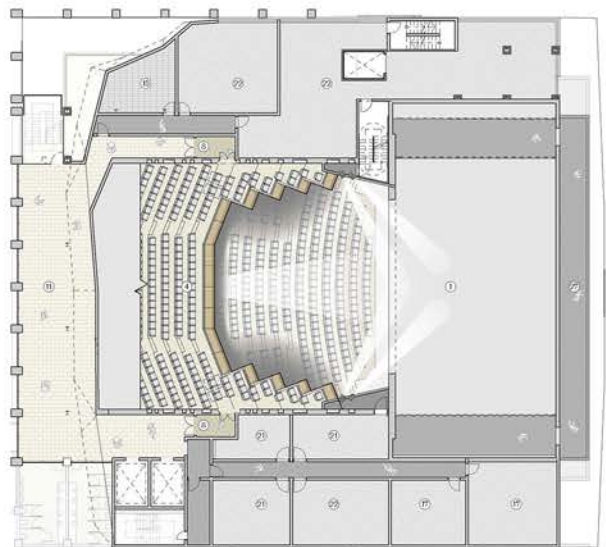
ground floor plan



east west section

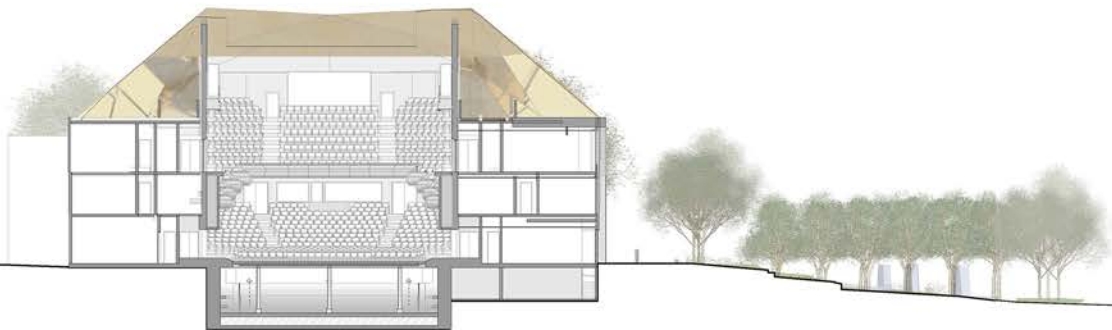


level one plan

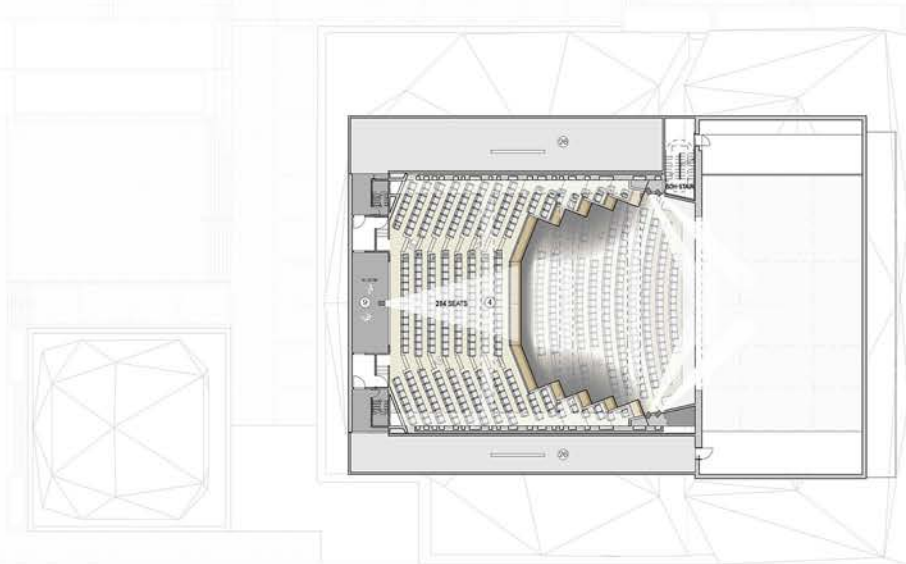


level two plan





north-south section



projection room plan

LEGEND

1. STAGE (317 SQM)
2. ORCHESTRA PIT (50 SQM)
3. SEATING STALLS (323 SQM)
4. SEATING GALLERY (201 SQM)
5. CONTROL ROOM (11 SQM)
6. SOUND MIX AREA (5 SQM)
7. PARENT ROOM (14 SQM)
8. SOUND/LIGHT LOCKS (37 SQM)
9. FOLLOW-SPOT ROOM (20 SQM)
10. REHEARSAL ROOM (108 SQM)
11. FOYER (720 SQM)
12. AUDIENCE SERVICES (25 SQM)
13. FIRST AID ROOM (16 SQM)
14. STORAGE (363 SQM)
15. AMENITIES (237 SQM)
16. DRESSING ROOM (114 SQM)
17. CHORUS/SCHOOL GROUP (159 SQM)
18. LOADING DOCK (100 SQM)
19. STAGE DOOR (29 SQM)
20. GREEN ROOM (35 SQM)
21. THEATRE BOH (92 SQM)
22. OFFICE (246 SQM)
23. RESTAURANT (143 SQM)
24. KITCHEN (53 SQM)
25. BAR (24 SQM)
26. PLANT (271 SQM)
27. CIRCULATION (381 SQM)