

Hazelhurst

REGIONAL GALLERY & ARTS CENTRE

Find us on



For further information and special events, talks, workshops and tours and to join our mailing list visit www.hazelhurst.com.au

Admission free

Open daily 10am–5pm
(closed Christmas Day,
Boxing Day & New Year's Eve)

782 Kingsway Gymea
ph: (02) 8536 5700
fax: (02) 8536 5750
email: hazelhurst@ssc.nsw.gov.au



Communities
arts nsw

Principal partners



VEOLIA
TRANSPORT



GLOBAL
SPECIALISED SERVICES PTY. LTD.
FINE ART & EXHIBITION SUPPLIES



Hazelhurst is about 40 minutes drive from Sydney's CBD. It is a five minute walk from Gymea Railway Station (Illawarra line).

Dates current at time of printing
but may be subject to change



Hazelhurst

REGIONAL GALLERY & ARTS CENTRE

Regional Gallery
Community Gallery
Arts Centre
Studios
Gallery Café
Gallery Shop
Gardens
Artist In Residence



Opened in 2000, Hazelhurst is one of the most popular and leading regional galleries and art centres in Australia.

Located just 40 minutes south of Sydney CBD near the gateway to the Royal National Park, Hazelhurst is an inspiring arts oasis set amid 1.4 hectares of garden.

Changing exhibitions of national significance and leading local artists are presented, as well as art for sale. A vibrant arts centre with seven studios offers workshops and classes in ceramics, printmaking, painting, jewellery and new media.

Overlooking the gardens, the Hazelhurst Café is a popular meeting place for breakfast, lunch and high teas.



IN CLAY

20 August –
9 October



Lynda Draper *Home Altar* (detail), 2010,
photo courtesy of the artist

A major exhibition of contemporary ceramics by graduates and teachers from the Ceramics Design Studio at Sutherland TAFE, Gymea.

// **FREE ARTIST TALK**
Sunday 21 August 2pm

// **DEMONSTRATION & DISCUSSION**
with Michael Keighery
Sunday 11 September 10am–3pm*

// **WEEKEND CLAY WORKSHOP**
Creatures in clay with Claudia Citton
For 8–13 year olds
Sunday 18 September 10am–1pm*

*Bookings: 8536 5700

AN UNNATURAL HISTORY OF NATURE

20 August –
9 October

Sydney College of the Arts lecturers Adam Geczy and Jan Guy, present delicate ceramics, made from fine bone china, alongside video works and photography in an installation exploring museology, the construction of nature and the agonistic human relationship between nature and mediation.

// **FREE ARTIST TALK**
Sunday 21 August 2pm

// **FREE ARTMAKING FOR CHILDREN**

// **GUIDED TOURS**
Saturdays & Sundays 2pm

Adam Geczy & Jan Guy,
Fired Chicken Bones, 2010 (detail)



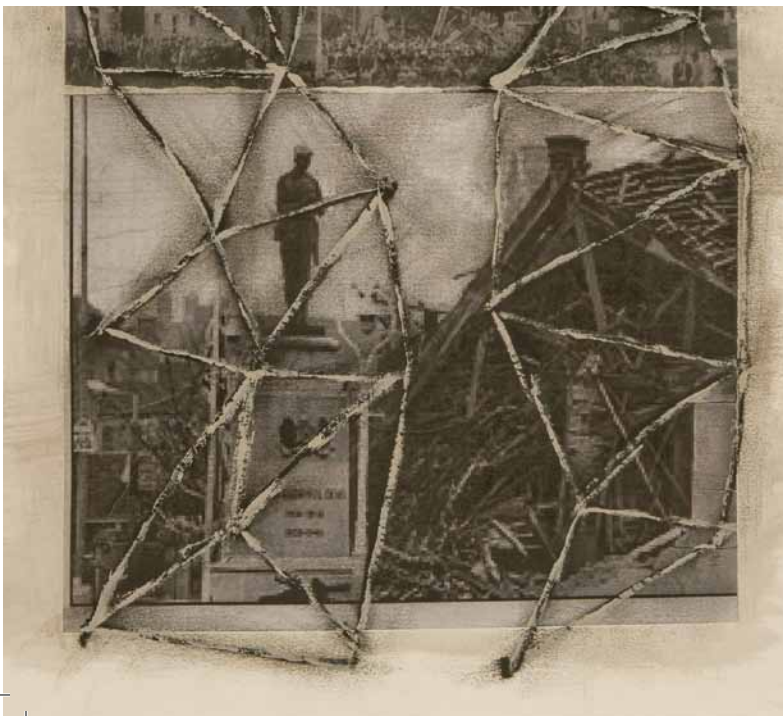
ENNISKILLEN: RECENT WORK OF DAVID RANKIN

15 October –
27 November

New York based local artist David Rankin confronts the devastating Remembrance Day attacks, which occurred in Ireland in 1987. Rankin's father, who is from Enniskillen, lost two family members during the bombing. In this moving series of paintings and murals, Rankin attempts to reconcile his history and heritage. *Enniskillen* celebrates the typically Australian story of where one comes from, with where they end up. Rankin's journey began in Gymea and led him to New York.

// **SPECIAL EVENT: HAZELHURST OPEN DAY**
Sunday 30 October 10am–5pm
Free entertainment & art making

David Rankin *Enniskillen* 2011
(detail), mixed media on paper



PRINTS FROM THE GRIFFITHS STUDIO 1978–2011

15 October –
27 November

The Griffiths Studio has become a yardstick for quality print production in Australia and a training facility for many master printers. Artists exhibiting lithographs, etchings and relief prints include Matthew Ablitt, David Boyd, Adam Cullen, Tony Coleing, George Gittoes, Pamela Griffith, Michael Kempson, Yannima Tommy Watson, Trevor Weekes, Salvatore Zofrea.

// **FREE ARTIST TALK** with Pamela Griffith
Sunday 16 October 2pm

// **PRINTMAKING WORKSHOPS**

// **GUIDED TOURS**
Saturdays & Sundays 2pm

Matthew Ablitt *Suspension III* 2010
(detail), collograph, courtesy the artist



AUSTRALIAN PORTRAITS 1880–1960

3 December 2011 –
29 January 2012

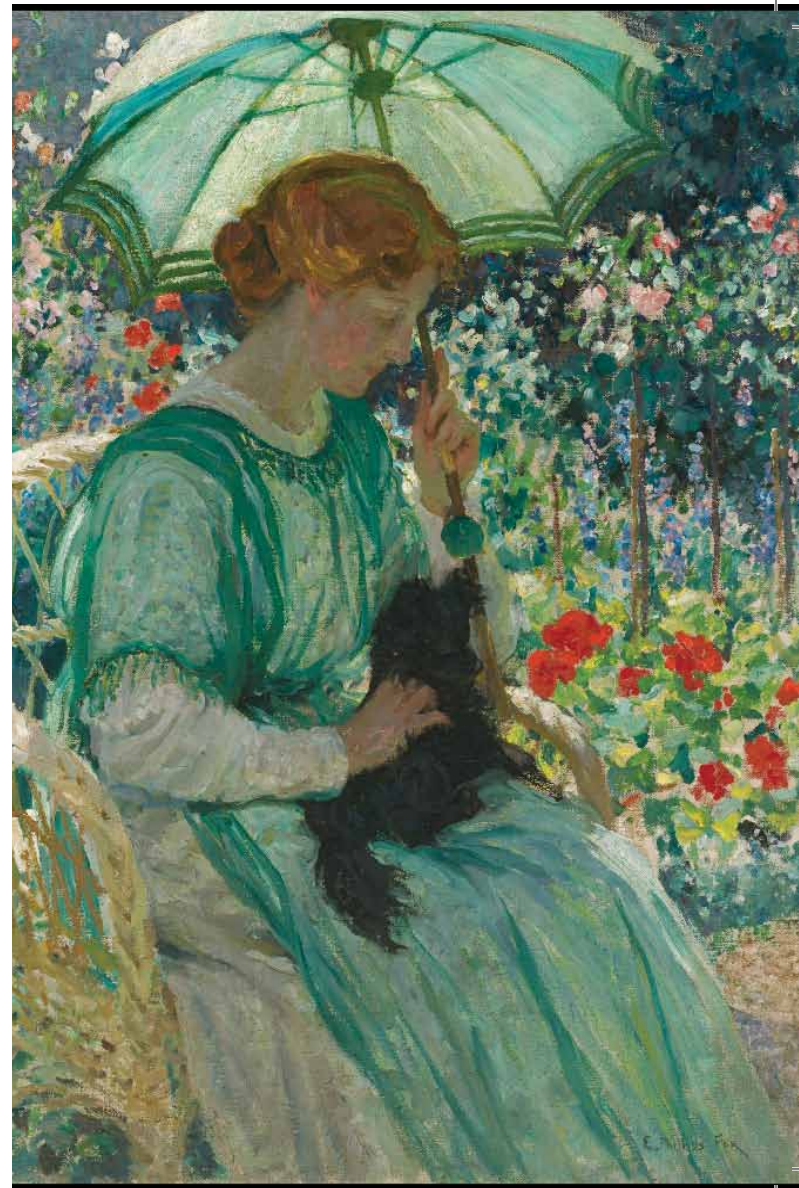
A major exhibition from the National Gallery
of Australia's collection.

Featuring 54 portraits by 34 leading Australian
painters, including Tom Roberts, E Phillips
Fox, Hugh Ramsay, George W Lambert,
Rupert Bunny, Margaret Preston, Albert Tucker,
Arthur Boyd, Sidney Nolan, Russell Drysdale
and John Brack.

// SUMMER HOLIDAY WORKSHOPS & EVENTS

// GUIDED TOURS
Saturdays & Sundays 2pm

Albert Tucker *Self-portrait* 1941 © Barbara
Tucker; Margaret Preston *Flapper* 1925
© Margaret Rose Preston Estate. Licensed
by Viscopy; opposite: E Phillips Fox *The
green parasol* c1912 (detail). All works
from the collection of the National Gallery
of Australia, Canberra



IN THE COMMUNITY GALLERY

Solo and group exhibitions by amateur and professional artists are on view and for sale in a regularly changing program. Providing valuable exposure and experience for developing careers the Community Gallery is available for hire on submission.

Clothes for the hard pressed – Dior Mahnken
3–13 September

Bon appetit – circle of clay artists
17–27 September

Liminal – Gynea Tafe graduating students
1–11 October

The magical nature of prints – Pamela Griffith
15–25 October

Three generations: four perspectives.
Alexandra Wood, Amanda Izzard,
Sean Izzard, Clive Stevens
29 October – 8 November

Not just a brush – Students from
Kindergarten to Year 6
12–22 November

Fiona McFadyen – Waters edge
26 November – 6 December

Art rules – HSC Artwork
10 December '11 – 15 January '12

Fiona McFadyen, *Under the boardwalk*, 2009



SPECIAL EVENTS

// MASTER CLASSES

// HOLIDAY FUN

// OPEN DAYS

// FAMILY DAYS

// PERFORMANCES

// FILMS

// LECTURES

// HAZELHURST OPEN DAYS

Sunday 30 October 2011

Sunday 19 February 2012

CREATIVE EDUCATION

Creative and skills based education programs for primary (K–6) and secondary school students (7–12). Visit the latest exhibition in the Regional Gallery, explore the beautiful landscaped gardens and make use of state of the art studio facilities. A preschool program is also available. FREE return bus travel courtesy of Veolia Transport every Monday and Tuesday all year round (conditions apply). Bookings 8536 5745.

